

Product datasheet for **AM09254PU-N**

PML Protein (PML) Mouse Monoclonal Antibody [Clone ID: B3E9]

Product data:

Product Type:	Primary Antibodies
Clone Name:	B3E9
Applications:	WB
Recommended Dilution:	Western Blot: Use PML antibody at 1/2,000 dilution to differentiate normal PML and Chimeric PML/RAR alpha molecules based on their molecular weight.
Reactivity:	Human
Host:	Mouse
Isotype:	IgG1
Clonality:	Monoclonal
Immunogen:	Recombinant partial Human PML.
Specificity:	This antibody recognizes normal PML proteins of lower Molecular Weight, and also recognizes the High Molecular Weight PML/RAR-alpha Chimeric protein in promyelocytic leukemia patients.
Formulation:	0.01M PBS, pH 7.4 without preservatives. State: Aff - Purified State: Lyophilized purified Ig fraction.
Reconstitution Method:	Restore by adding appropriate volume of distilled water to reach a final antibody concentration of 1.0 mg/ml.
Purification:	Affinity Chromatography on Protein G.
Conjugation:	Unconjugated
Storage:	Store the antibody (in aliquots) at -20°C. After reconstitution, aliquot and store at -20°C.
Stability:	Shelf life: one year from despatch.
Gene Name:	promyelocytic leukemia
Database Link:	Entrez Gene 5371 Human P29590



[View online »](#)

Background: PML is a member of the tripartite motif (TRIM) family. The TRIM motif includes three zinc-binding domains, a RING, a B-box type 1 and a B-box type 2, and a coiled-coil region. This phosphoprotein localizes to nuclear bodies where it functions as a transcription factor and tumor suppressor. Its expression is cell-cycle related and it regulates the p53 response to oncogenic signals.

Synonyms: RING finger protein 71, MYL, TRIM19

Protein Families: Druggable Genome, Transcription Factors

Protein Pathways: Acute myeloid leukemia, Pathways in cancer, Ubiquitin mediated proteolysis

Product images:

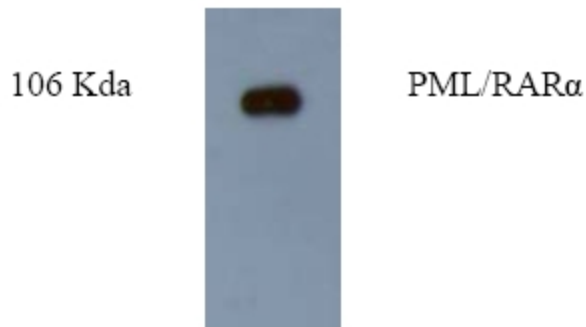


Figure.1 Western blot analysis of extracts from K562 cells using anti-PML antibody.