

Product datasheet for **AM09242PU-N**

MUC16 Mouse Monoclonal Antibody [Clone ID: 23]

Product data:

Product Type:	Primary Antibodies
Clone Name:	23
Applications:	ELISA, FC, IF
Recommended Dilution:	ELISA: 0.5 ng/ml or higher can recognize ELISA plates wells coated with CA125 at 5 international units per well. Flow Cytometry: 10 µg/ml. Immunofluorescence: 10 µg/ml.
Reactivity:	Human
Host:	Mouse
Isotype:	IgG2a
Clonality:	Monoclonal
Immunogen:	Human CA125.
Specificity:	Reactive with Human CA125.
Formulation:	0.01M PBS, pH 7.2 without preservatives State: Aff - Purified State: Lyophilized purified Ig fraction
Reconstitution Method:	Restore with Double distilled water to adjust the final concentration to 1.0 mg/ml.
Purification:	Affinity Chromatography on Protein G
Conjugation:	Unconjugated
Storage:	Upon receipt, store undiluted (in aliquots) at -20°C. Avoid repeated freezing and thawing.
Stability:	Shelf life: one year from despatch.
Gene Name:	mucin 16, cell surface associated
Database Link:	Entrez Gene 94025 Human Q8WXI7



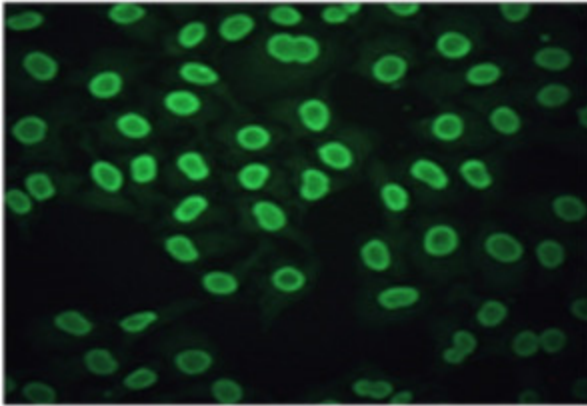
[View online »](#)

Background:

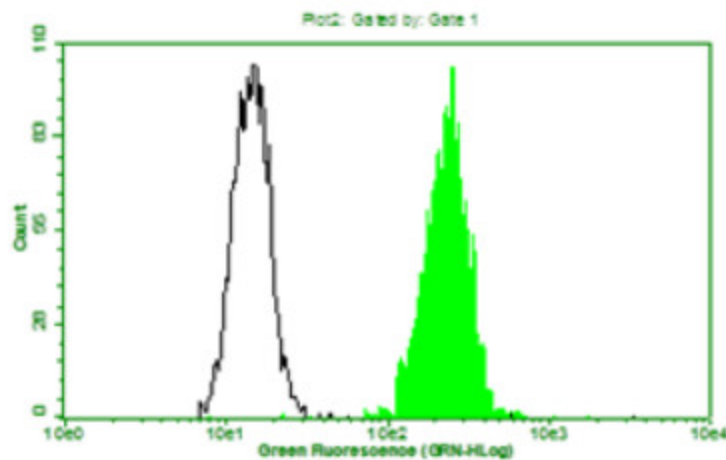
Mucin16 (CA125) is a serum marker that is used routinely in gynecologic practice to monitor patients with ovarian cancer. It is a müllerian duct differentiation antigen that is overexpressed in epithelial ovarian cancer cells and secreted into the blood, although its expression is not entirely confined to ovarian cancer. Most biochemical studies have concluded that MUC16 is a high molecular mass glycoprotein, although estimates of its size range from 200 to 2000 kDa with smaller *subunits* being described by some investigators.

Synonyms:

MUC16, MUC-16, CA-125, CA 125

Product images:

Staining of methanol-fixed HeLa cells by Immunofluorescence: Anti-CA 125 mAb clone 23 used at 10µg/ml.



HeLa cells stained with 10µg/ml anti-CA 125 mAb clone 23 and fluorescence-labelled secondary antibody. Black line represents the histogram of HeLa cells stained with control antibody, mouse anti-TB 38Kd antigen mAb clone B12F8.