

## Product datasheet for **AM09160PU-N**

### FGF2 Mouse Monoclonal Antibody [Clone ID: F-474]

#### Product data:

Product Type:	Primary Antibodies
Clone Name:	F-474
Applications:	ELISA, WB
Recommended Dilution:	ELISA. Western Blot.
Reactivity:	Human
Host:	Mouse
Isotype:	IgG2a
Clonality:	Monoclonal
Immunogen:	Purified recombinant Human bFGF.
Specificity:	This monoclonal bFGF antibody is specific to Human Fibroblast Growth Factor basic (bFGF).
Formulation:	0.01M PBS, pH 7.2 without preservatives. State: Aff - Purified State: Lyophilized purified Ig fraction.
Reconstitution Method:	Double distilled water is recommended to adjust the final concentration to 1.00 mg/ml
Concentration:	lot specific
Purification:	Affinity Chromatography on Protein G.
Conjugation:	Unconjugated
Storage:	Store the antibody at -20°C. Avoid repeated freezing and thawing.
Stability:	Shelf life: one year from despatch.
Gene Name:	fibroblast growth factor 2
Database Link:	<a href="#">Entrez Gene 2247 Human P09038</a>



[View online »](#)

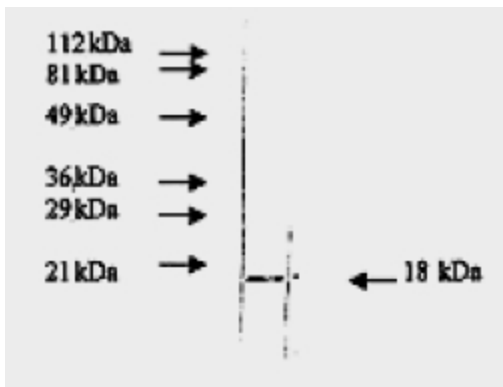
**Background:** FGF-basic (FGFB, FGF2) is one of 23 known members of the FGF family. Proteins of this family play a central role during prenatal development and postnatal growth and regeneration of a variety of tissues, by promoting cellular proliferation and differentiation. FGF-basic is a non-glycosylated heparin binding growth factor that is expressed in the brain, pituitary, kidney, retina, bone, testis, adrenal gland liver, monocytes, epithelial cells and endothelial cells. FGF-basic signals through FGFR 1b, 1c, 2c, 3c and 4.

**Synonyms:** FGFB, Heparin-binding growth factor 2, Fibroblast growth factor 2 (basic), BFGF, HBGF-2, HBGF2

**Protein Families:** Druggable Genome, Secreted Protein

**Protein Pathways:** MAPK signaling pathway, Melanoma, Pathways in cancer, Regulation of actin cytoskeleton

### Product images:



Western blot analysis of Human bFGF using Monoclonal anti-Human bFGF antibody