

Product datasheet for **AM09138PU-S**

UBE2S Mouse Monoclonal Antibody [Clone ID: AT2C12]

Product data:

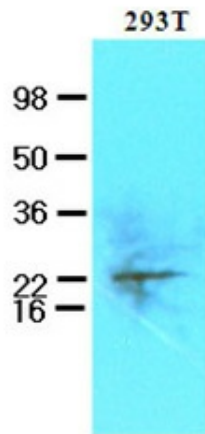
Product Type:	Primary Antibodies
Clone Name:	AT2C12
Applications:	ELISA, IF, WB
Recommended Dilution:	ELISA. Western blot (1:250 - 1:500). Immunofluorescence (1:250 - 1:500).
Reactivity:	Human
Host:	Mouse
Isotype:	IgG2a
Clonality:	Monoclonal
Immunogen:	Recombinant human UBE2S (1-222 aa) purified from E. coli
Specificity:	The antibody recognizes human UBE2S. Other species not tested.
Formulation:	PBS, pH 7.4 containing 0.02% Sodium Azide and 10% Glycerol State: Purified State: Liquid purified Ig fraction
Concentration:	lot specific
Purification:	Protein-G affinity chromatography
Conjugation:	Unconjugated
Storage:	Store undiluted at 2-8°C for up to two weeks or (in aliquots) at -20°C for longer. Avoid repeated freezing and thawing.
Stability:	Shelf life: one year from despatch.
Gene Name:	ubiquitin conjugating enzyme E2 S
Database Link:	Entrez Gene 27338 Human Q16763
Background:	UBE2S, also known as ubiquitin-conjugating enzyme E2S, is a member of the ubiquitin-conjugating enzyme family. This protein is able to form a thiol ester linkage with ubiquitin in an ubiquitin activating enzyme-dependent manner, a characteristic property of ubiquitin carrier proteins. It catalyzes the covalent attachment of ubiquitin to other proteins.



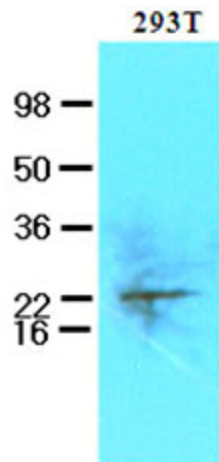
[View online »](#)

Synonyms: Ubiquitin-conjugating enzyme E2 S, Ubiquitin-protein ligase S, Ubiquitin carrier protein S, E2-EPF5, E2EPF, OK/SW-cl.73

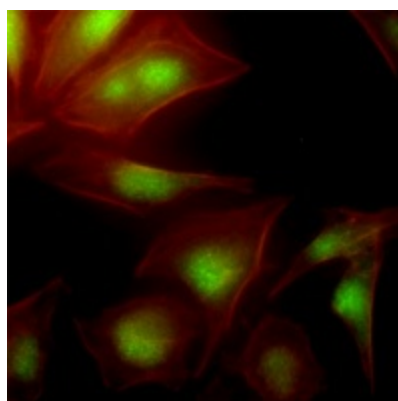
Product images:



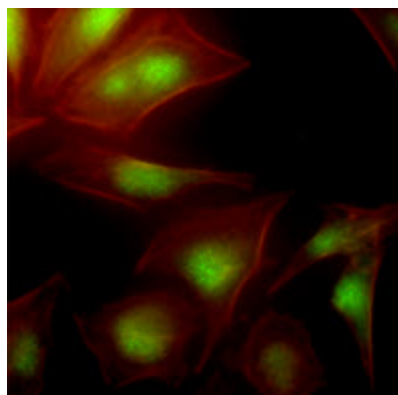
Cell lysates of 293T (50ug) were resolved by SDS-PAGE, transferred to NC membrane and probed with anti-human UBE2S (1:250). Proteins were visualized using a goat anti-mouse secondary antibody conjugated to HRP and an ECL detection system.



Western blot analysis: Cell lysates of 293T (50 ug) were resolved by SDS-PAGE, transferred to NC membrane and probed with anti-human UBE2S (1:250). Proteins were visualized using a goat anti-mouse secondary antibody conjugated to HRP and an ECL detection system.



Immunofluorescence of human HeLa cells stained with Phalloidin-TRITC (Red) for Actin staining and monoclonal anti-human UBE2S antibody (1:500) with Alexa 488 (Green).



Immunofluorescence: Immunofluorescence of human HeLa cells stained with Phalloidin-TRITC (Red) for Actin staining and monoclonal anti-human UBE2S antibody (1:500) with Alexa 488 (Green).