

Product datasheet for **AM09100PU-T**

p21 (CDKN1A) Mouse Monoclonal Antibody [Clone ID: WA-1]

Product data:

Product Type:	Primary Antibodies
Clone Name:	WA-1
Applications:	FC, IF, IHC
Recommended Dilution:	Flow Cytometry: 0.5-1 µg/10 ⁶ cells in 100 µl. Immunofluorescence: 1-2 µg/ml. Immunohistochemistry on Paraffin Sections: 0.5-1 µg/ml for 30 minutes at RT. Staining of formalin-fixed tissues requires boiling tissue sections in 10mM citrate buffer, pH 6.0, for 10-20 min followed by cooling at RT for 20 minutes. Positive Control: HeLa Cells. Skin, colon, or breast carcinoma.
Reactivity:	Chimpanzee, Human, Monkey, Mouse, Rat
Host:	Mouse
Isotype:	IgG1
Clonality:	Monoclonal
Immunogen:	Recombinant Human p21 protein.



[View online »](#)

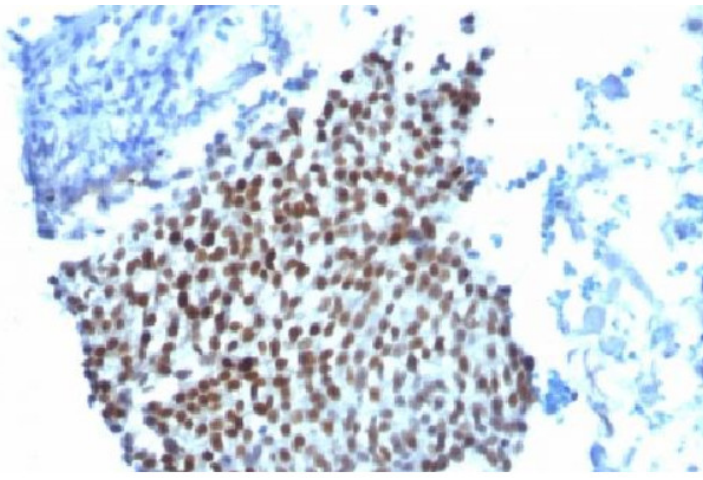
Specificity:	<p>This Monoclonal antibody <i>WA-1</i> (same as <i>HJ21</i>) recognizes a 21kDa protein, identified as the p21^{WAF1} tumor suppressor protein.</p> <p>This Monoclonal antibody <i>WA-1</i> is highly specific to p21 and shows no cross-reaction with other closely related mitotic inhibitors.</p> <p>It is interesting to note that p21 expression is induced by wild type, but not mutant p53. The <i>HJ21/WA-1</i> antibody clone has been used to demonstrate this phenomenon by western blot (Blaydes, 2001). The inability of mutant p53 to induce p21 essentially means that normal functions of p21 are compromised when p53 gene mutations are present. Since p53 gene mutations are present in up to 50% of human cancers, the loss of p21 function in cancer is significant.</p> <p>In its normal functioning state, p21 binds to cyclin/CDK complexes. When it binds to these complexes, it inhibits their kinase activity which, in turn, stops cell cycle progression and hence p21 gains its reputation as a mitotic cell cycle inhibitor. In this regard, the antibody showed that decreased Cdk2-cyclin E1 activity corresponded with a decrease in cyclin E1 and increase in p21 protein levels (White, 2005).</p> <p>The antibody is highly specific to p21; it does not cross-react with other closely related mitotic inhibitors.</p> <p>Specificity validations include antibody recognition of recombinant p21 by western blot (Koike, 2011) and in direct ELISA assays (Rossner, 2002 & 2007). Although the exact epitope for the antibody has not been mapped, the epitope appears to be different from those recognize by other p21 antibody clones.</p>
Formulation:	<p>10mM PBS State: Purified State: Liquid purified IgG fraction from Bioreactor Concentrate Stabilizer: 0.05% BSA Preservative: 0.05% Sodium Azide</p>
Concentration:	lot specific
Purification:	Protein A/G Chromatography
Conjugation:	Unconjugated
Storage:	<p>Store undiluted at 2-8°C. DO NOT FREEZE!</p>
Stability:	Shelf life: one year from despatch.
Predicted Protein Size:	21 kDa
Gene Name:	cyclin-dependent kinase inhibitor 1A
Database Link:	Entrez Gene 1026 Human P38936

Background:

p21 (WAF1), a member of the cycle dependent kinase (CDK) inhibitor family, was first identified as a tumor suppressor or anti-oncogenic protein and negative regulator of the cell cycle. Over the years it became apparent that p21 has broad functions in regulating fundamental cellular programs including proliferation, differentiation, migration, senescence, and has both anti-oncogenic and oncogenic properties (reviewed in Romanov, 2012). Many antibody and other studies have demonstrated that p21 levels are frequently elevated in situations associated with reduced proliferation, including differentiation and senescence, and decreased in proliferative states. Subcellular localization may be significant and nuclear antibody staining may be indicative of p21 functioning as a cell cycle inhibitor, tumor suppressor, or in a senescence program. In contrast, cytoplasmic antibody staining may indicate p21 is acting as an oncogene through regulation of migration, proliferation, or apoptosis.

Synonyms:

CAP20, CDKN1, CIP1, MDA6, MDA-6, PIC1, SDI1, WAF1

Product images:

Formalin-Fixed, Paraffin-Embedded Human Bladder Carcinoma stained with p21 Antibody (Clone WA-1).