

## Product datasheet for **AM09094SU-S**

### **TMEM16A (ANO1) Mouse Monoclonal Antibody [Clone ID: DOG1.1]**

#### **Product data:**

Product Type:	Primary Antibodies
Clone Name:	DOG1.1
Applications:	IHC
Recommended Dilution:	<b>Immunohistochemistry on Formalin-Fixed Paraffin Embedded Sections:</b> Use at 1/50-1/100 dilution when using a polymer detection system such as UnoVue or PolyVue systems. Paraffin-embedded tissue sections require high temperature antigen unmasking using 10 mM Citrate buffer, pH 6.0 prior to Immunostaining. <b>Suggested Incubation Time:</b> 30-60 minutes at room temperature. <b>Positive Control:</b> Gastrointestinal stromal tumor tissue.
Reactivity:	Human
Host:	Mouse
Isotype:	IgG
Clonality:	Monoclonal
Immunogen:	A synthetic peptide of Human DOG1 protein.
Specificity:	DOG1 is expressed ubiquitously in gastrointestinal stromal tumors irrespective of c-kit or PDGFR alpha mutation status. Reactivity for DOG1 may aid in the diagnosis of gastrointestinal stromal tumors, including PDGFRA mutants that fail to express c-kit antigen, and lead to appropriate treatment with imatinib mesylate, an inhibitor of the c-kit tyrosine kinase. Cellular Localization: Cytoplasmic and membrane.
Formulation:	Buffer, pH 7.5, containing BSA and Sodium Azide as preservatives. State: Supernatant State: Liquid Tissue Culture Supernatant
Conjugation:	Unconjugated
Storage:	Store undiluted at 2-8°C. <b>DO NOT FREEZE!</b>
Stability:	Shelf life: one year from despatch.
Gene Name:	anoctamin 1



[View online »](#)

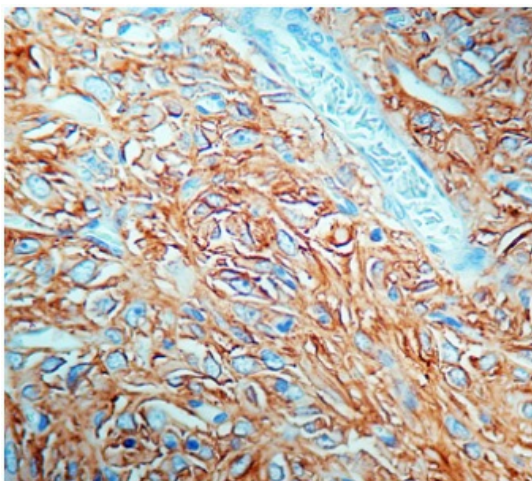
**Database Link:** [Entrez Gene 55107 Human Q5XXA6](#)

**Background:** DOG1 gene, a gastrointestinal stromal tumor (GIST) specific gene, encoding for the hypothetical protein FLJ10261, which was named Discovered on GIST 1 (DOG1). DOG1 protein is expressed ubiquitously in gastrointestinal stromal tumors irrespective of KIT or PDGFR alpha mutation status.

**Synonyms:** Anoctamin-1, Transmembrane protein 16A, DOG-1, ORAOV2, TAOS2, TMEM16A

**Protein Families:** Transmembrane

**Product images:**



Formalin-Fixed Paraffin-Embedded gastrointestinal stromal tumor stained with DOG1 Antibody Cat.-No AM09094SU (Clone DOG1.1).