

Product datasheet for **AM09090PU-N**

PDK1 (29-436) Mouse Monoclonal Antibody [Clone ID: AT2D6]

Product data:

Product Type:	Primary Antibodies
Clone Name:	AT2D6
Applications:	ELISA, FC, IF, WB
Recommended Dilution:	ELISA. Western blot (1:250 - 1:1,000). Immunocytochemistry / Immunofluorescence. Flow cytometry.
Reactivity:	Human, Rat
Host:	Mouse
Isotype:	IgG1
Clonality:	Monoclonal
Immunogen:	Recombinant human PDK1 (29-436 aa) purified from <i>E. coli</i>
Specificity:	The antibody recognizes PDK1 at aa 29-436.
Formulation:	PBS, pH 7.4 containing 0.02% Sodium Azide and 10% Glycerol State: Purified State: Liquid purified Ig fraction
Concentration:	lot specific
Purification:	Protein-G affinity chromatography
Conjugation:	Unconjugated
Storage:	Store undiluted at 2-8°C for up to two weeks or (in aliquots) at -20°C for longer. Avoid repeated freezing and thawing.
Stability:	Shelf life: one year from despatch.
Gene Name:	pyruvate dehydrogenase kinase 1
Database Link:	Entrez Gene 116551 Rat Entrez Gene 5163 Human Q15118



[View online »](#)

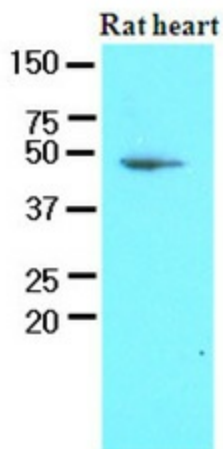
Background: PDK1 (pyruvate dehydrogenase kinase isoform 1) is involved in the regulation of enzymatic activity of mammalian pyruvate dehydrogenase (PDH) that is a part of a mitochondrial multienzyme complex to catalyze the oxidative decarboxylation of pyruvate and is one of the major enzymes responsible for the regulation of homeostasis of carbohydrate fuels in mammals. PDK1 has been found to serve as an effective therapeutic target for inhibition of glioblastoma growth.

Synonyms: Pyruvate dehydrogenase kinase isoform 1

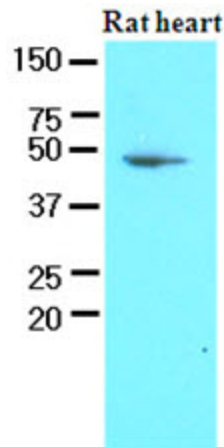
Protein Families: Druggable Genome, Protein Kinase

Protein Pathways: Fc epsilon RI signaling pathway, Neurotrophin signaling pathway, T cell receptor signaling pathway

Product images:



The extracts of rat heart (60ug) were resolved by SDS-PAGE, transferred to NC membrane and probed with anti-human PDK1 (1:250). Proteins were visualized using a goat anti-mouse secondary antibody conjugated to HRP and an ECL detection system.



Western blot analysis: The extracts of rat heart (60 ug) were resolved by SDS-PAGE, transferred to NC membrane and probed with anti-human PDK1 (1:250). Proteins were visualized using a goat anti-mouse secondary antibody conjugated to HRP and an ECL detection system.