

## Product datasheet for **AM09089PU-S**

### **BRCC36 (BRCC3) Mouse Monoclonal Antibody [Clone ID: AT3B1]**

#### **Product data:**

Product Type:	Primary Antibodies
Clone Name:	AT3B1
Applications:	ELISA, IHC, WB
Recommended Dilution:	ELISA. Western blot (1:1,000 - 1:2,000). Immunohistochemistry on Paraffin Sections: (5 µg/ml).
Reactivity:	Human
Host:	Mouse
Isotype:	IgG1
Clonality:	Monoclonal
Immunogen:	Recombinant BRCC36 (1-316 aa) purified from E. coli
Specificity:	The antibody recognizes human BRCC3 / BRCC36. Other species not tested.
Formulation:	PBS, pH 7.4 containing 0.02% Sodium Azide and 10% Glycerol State: Purified State: Liquid purified Ig fraction
Concentration:	lot specific
Purification:	Protein-G affinity chromatography
Conjugation:	Unconjugated
Storage:	Store undiluted at 2-8°C for up to two weeks or (in aliquots) at -20°C for longer. Avoid repeated freezing and thawing.
Stability:	Shelf life: one year from despatch.
Gene Name:	BRCA1/BRCA2-containing complex subunit 3
Database Link:	<a href="#">Entrez Gene 79184 Human P46736</a>



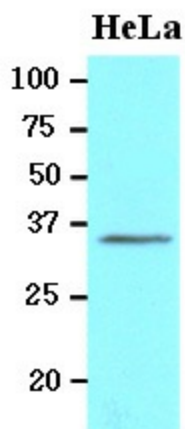
[View online »](#)

**Background:** BRCC3 (BRCC36, BRCA1/BRCA2-containing complex, subunit 36) is a holoenzyme complex containing BRCA1, BRCA2. BRCC36 is an ubiquitin E3 ligase complex that has a role in DNA repair and enhances cellular survival following DNA damage. This protein is also thought to be involved in the cellular response to ionizing radiation and progression through the G2/M checkpoint.

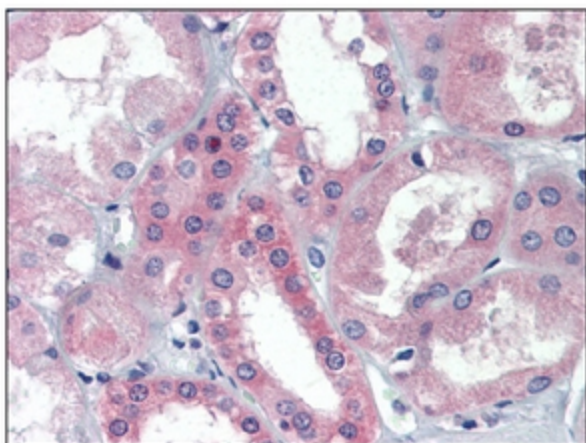
**Synonyms:** BRCC36, C6.1A, CXorf53

**Protein Families:** Druggable Genome, Protease

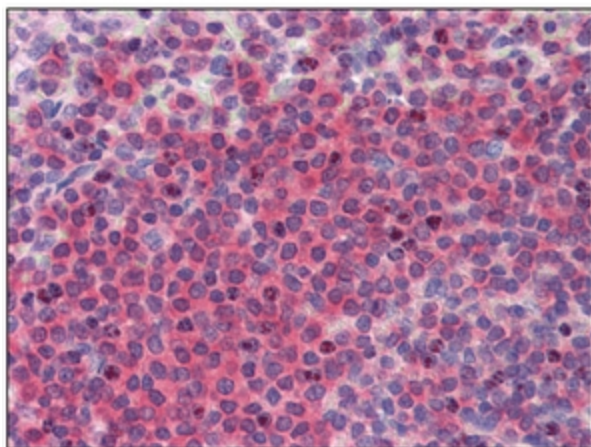
### Product images:



Western blot analysis : Cell lysates of HeLa (20 ug) were resolved by SDS-PAGE, transferred to NC membrane and probed with anti-human BRCC36 antibody (1/1000). Proteins were visualized using a goat anti-mouse secondary antibody conjugated to HRP and an ECL detection system.



Immunohistochemistry: -N BRCC3 antibody staining of Formalin-Fixed, Paraffin-Embedded Human Kidney followed by biotinylated secondary antibody, alkaline phosphatase-streptavidin and chromogen.



Immunohistochemistry: -N BRCC3 antibody staining of Formalin-Fixed, Paraffin-Embedded Human Spleen followed by biotinylated secondary antibody, alkaline phosphatase-streptavidin and chromogen.