

Product datasheet for **AM09087PU-N**

TMEFF2 Mouse Monoclonal Antibody [Clone ID: J4B6]

Product data:

Product Type:	Primary Antibodies
Clone Name:	J4B6
Applications:	ELISA, FC, IF, IHC, WB
Recommended Dilution:	ELISA. Western blot: 1/1000-1/2000. Immunocytochemistry/Immunofluorescence. Flow Cytometry. Immunohistochemistry on Paraffin Embedded Tissue: 1/50-1/100.
Reactivity:	Human, Mouse
Host:	Mouse
Isotype:	IgG2b
Clonality:	Monoclonal
Immunogen:	Recombinant human TMEFF2 (41-150 aa) purified from E. coli
Specificity:	The antibody recognizes TMEFF2.
Formulation:	PBS, pH 7.4 containing 0.02% Sodium Azide and 10% Glycerol State: Purified State: Liquid purified Ig fraction
Concentration:	lot specific
Purification:	Affinity Chromatography on Protein G
Conjugation:	Unconjugated
Storage:	Store undiluted at 2-8°C for up to two weeks or (in aliquots) at -20°C for longer. Avoid repeated freezing and thawing.
Stability:	Shelf life: one year from despatch.
Gene Name:	transmembrane protein with EGF like and two follistatin like domains 2
Database Link:	Entrez Gene 23671 Human Q9UIK5



[View online »](#)

Background:

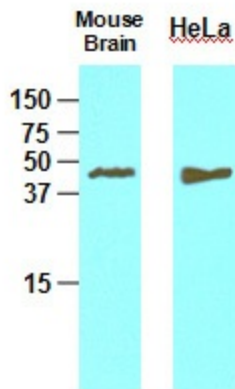
TMEFF2 (transmembrane protein with EGF-like and two follistatin-like domains 2), a gene encoding a plasma membrane protein with two follistatin-like domains and one epidermal growth factor-like domain, had limited normal tissue distribution and was highly overexpressed in prostate cancer. The shedded form up-regulates cancer cell proliferation, probably by promoting ERK1/2 phosphorylation. Down-regulated in tumor cell lines in response to a high level of methylation in the 5' region.

Synonyms:

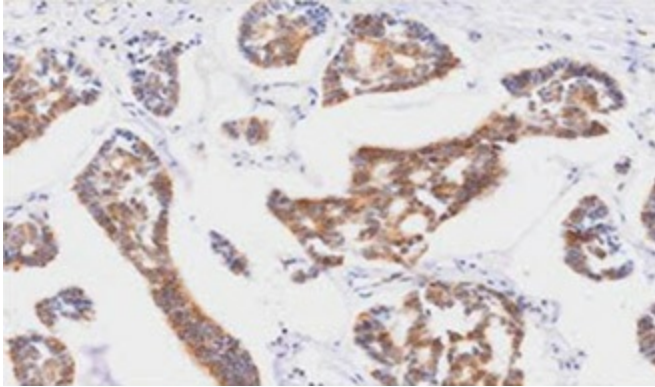
TENB2, TPEF, HPP1

Protein Families:

Transmembrane

Product images:

Western blot analysis: Cell lysates of Mouse brain and HeLa (30 ug) were resolved by SDS-PAGE, transferred to NC membrane and probed with anti-human TMEFF2 (1:1000). Proteins were visualized using a goat anti-mouse secondary antibody conjugated to HRP and an ECL detection system.



Paraffin embedded sections of human breast cancer tissue were incubated with anti-human TMEFF2 (1:50) for 2 hours at room temperature. Antigen retrieval was performed in 0.1 M sodium citrate buffer and detected using Diaminobenzidine (DAB).