

Product datasheet for **AM09086PU-S**

TDP1 Mouse Monoclonal Antibody [Clone ID: AT1F2]

Product data:

Product Type:	Primary Antibodies
Clone Name:	AT1F2
Applications:	ELISA, IHC, WB
Recommended Dilution:	ELISA. Western blot: 1/1,000-1/2,000. Immunohistochemistry on Paraffin Sections: 5 µg/ml.
Reactivity:	Human
Host:	Mouse
Isotype:	IgG2b
Clonality:	Monoclonal
Immunogen:	Recombinant Human TDP1 (1-298 aa) purified from E. coli
Specificity:	The antibody recognizes Human TDP1. Other species not tested.
Formulation:	PBS, pH 7.4 containing 0.02% Sodium Azide and 10% Glycerol State: Purified State: Liquid purified Ig fraction
Concentration:	lot specific
Purification:	Affinity Chromatography on Protein G
Conjugation:	Unconjugated
Storage:	Store undiluted at 2-8°C for up to two weeks or (in aliquots) at -20°C for longer. Avoid repeated freezing and thawing.
Stability:	Shelf life: one year from despatch.
Gene Name:	tyrosyl-DNA phosphodiesterase 1
Database Link:	Entrez Gene 55775 Human Q9NUW8



[View online »](#)

Background:

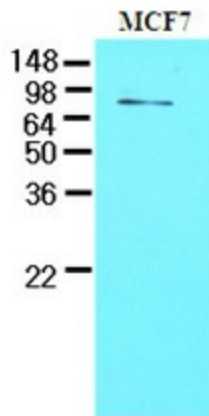
Tyrosyl-DNA phosphodiesterase (TDP1) is a DNA repair enzyme that catalyzes the hydrolysis of a phosphodiester bond between a tyrosine residue and a DNA 3' phosphate. This protein is a member of the phospholipase D (PLD) superfamily and contains two PLD phosphodiesterase domains. Mutations in TDP1 are associated with the disease spinocerebellar ataxia with axonal neuropathy (SCAN1) by interfering with DNA transcription or by inducing apoptosis in postmitotic neurons.

Synonyms:

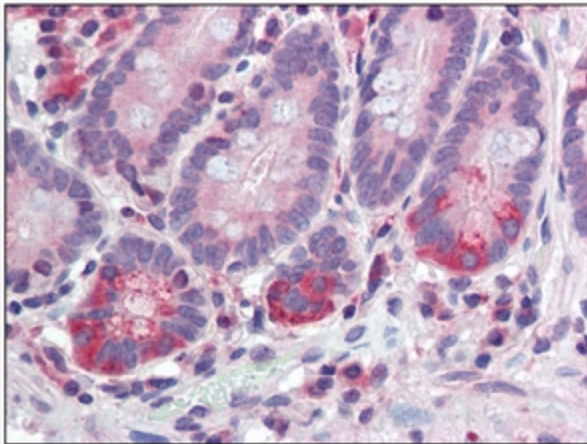
Tyrosyl-DNA phosphodiesterase 1

Protein Families:

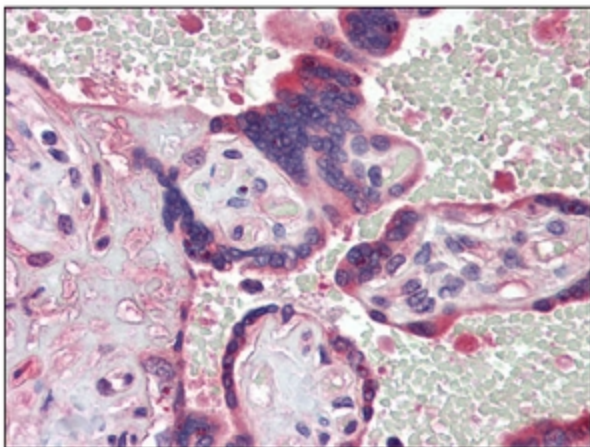
Druggable Genome

Product images:

Western blot analysis: Cell lysates of MCF7 (30 ug) were resolved by SDS-PAGE, transferred to NC membrane and probed with anti-Human TDP1 antibody (1/1000). Proteins were visualized using a goat anti-Mouse secondary antibody conjugated to HRP and an ECL detection system.



Immunohistochemistry: -N TDP1 antibody staining of Formalin-Fixed, Paraffin-Embedded Human Small Intestine followed by biotinylated secondary antibody, alkaline phosphatase-streptavidin and chromogen.



Immunohistochemistry: -N TDP1 antibody staining of Formalin-Fixed, Paraffin-Embedded Human Placenta followed by biotinylated secondary antibody, alkaline phosphatase-streptavidin and chromogen.