

## Product datasheet for **AM09083PU-S**

### Ribonuclease Inhibitor (RNH1) Mouse Monoclonal Antibody [Clone ID: AT1H23]

#### Product data:

Product Type:	Primary Antibodies
Clone Name:	AT1H23
Applications:	ELISA, IHC, WB
Recommended Dilution:	<b>ELISA.</b> <b>Western blot</b> (1/1,000-1/2,000). <b>Immunohistochemistry on Paraffin Sections</b> (5 µg/ml). This RNH1 antibody was validated for use in immunohistochemistry on a panel of 21 formalin-fixed, paraffin-embedded (FFPE) human tissues after heat induced antigen retrieval in pH 6.0 citrate buffer. After incubation with the primary antibody, slides were incubated with biotinylated secondary antibody, followed by alkaline phosphatase-streptavidin and chromogen.
Reactivity:	Human, Mouse
Host:	Mouse
Isotype:	IgG2a
Clonality:	Monoclonal
Immunogen:	Recombinant Ribonuclease inhibitor 1 (RNH1) (7-461 aa) purified from <i>E. coli</i>
Specificity:	The antibody recognizes Human and Mouse RNH1 (7-461). Other species not tested.
Formulation:	PBS, pH 7.4 containing 0.02% Sodium Azide and 10% Glycerol State: Purified State: Liquid purified Ig fraction
Concentration:	lot specific
Purification:	Protein-G affinity chromatography
Conjugation:	Unconjugated
Storage:	Store undiluted at 2-8°C for up to two weeks or (in aliquots) at -20°C for longer. Avoid repeated freezing and thawing.
Stability:	Shelf life: one year from despatch.
Gene Name:	ribonuclease/angiogenin inhibitor 1



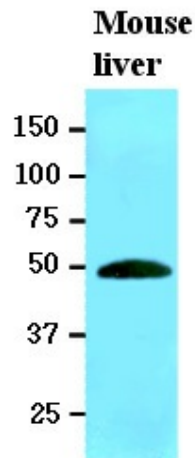
[View online »](#)

Database Link: [Entrez Gene 107702 Mouse](#)[Entrez Gene 6050 Human](#)  
[P13489](#)

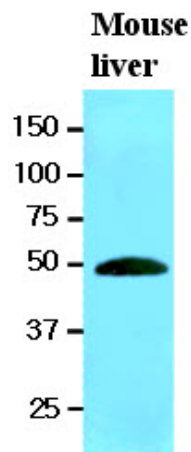
**Background:** Ribonuclease inhibitor 1 (RNH1) the placental ribonuclease inhibitor, is an acid protein with a molecular weight of 50 kDa. RNH1 is a member of a family of proteinaceous cytoplasmic RNase inhibitors that are expressed in many tissues and bind to both intracellular and extracellular RNases in the cytosol. RNH1 is a role in abolishing the ribonucleolytic and angiogenic activities of angiogenin.

**Synonyms:** Ribonuclease/angiogenin inhibitor 1, RAI, RNH, PRI

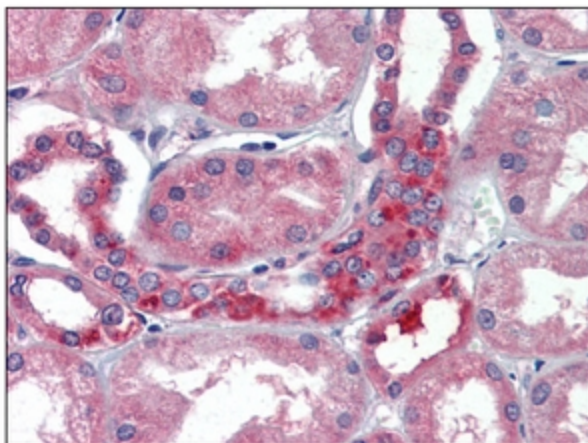
**Product images:**



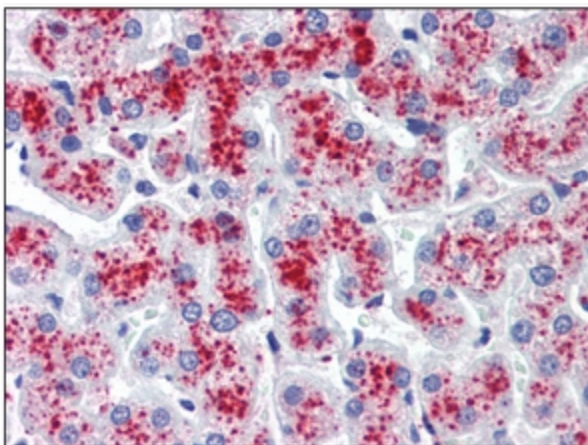
The extracts of mouse liver (20ug) were resolved by SDS-PAGE, transferred to NC membrane and probed with anti-human RNH1 (1:1000). Proteins were visualized using a goat anti-mouse secondary antibody conjugated to HRP and an ECL detection system.



Western blot analysis : The extracts of mouse liver (20 ug) were resolved by SDS-PAGE, transferred to NC membrane and probed with anti-human RNH1 antibody (1/1000). Proteins were visualized using a goat anti-mouse secondary antibody conjugated to HRP and an ECL detection system.



Immunohistochemistry: -N RNH1 antibody staining of Formalin-Fixed, Paraffin-Embedded Human Kidney followed by biotinylated secondary antibody, alkaline phosphatase-streptavidin and chromogen.



Immunohistochemistry: -N RNH1 antibody staining of Formalin-Fixed, Paraffin-Embedded Human Liver followed by biotinylated secondary antibody, alkaline phosphatase-streptavidin and chromogen.