

Product datasheet for **AM09081PU-S**

LITAF Mouse Monoclonal Antibody [Clone ID: AT5C10]

Product data:

Product Type:	Primary Antibodies
Clone Name:	AT5C10
Applications:	ELISA, FC, WB
Recommended Dilution:	ELISA. Western blot (1/2000-1/3000). Flow CYtometry.
Reactivity:	Human
Host:	Mouse
Isotype:	IgG2b
Clonality:	Monoclonal
Immunogen:	Recombinant human LITAF (1-161 aa) purified from E. coli
Specificity:	The antibody recognizes Human LITAF. Other species not tested.
Formulation:	PBS, pH 7.4 containing 0.02% Sodium Azide and 10% Glycerol State: Purified State: Liquid purified Ig fraction
Concentration:	lot specific
Purification:	Protein-G affinity chromatography
Conjugation:	Unconjugated
Storage:	Store undiluted at 2-8°C for up to two weeks or (in aliquots) at -20°C for longer. Avoid repeated freezing and thawing.
Stability:	Shelf life: one year from despatch.
Gene Name:	lipopolysaccharide induced TNF factor
Database Link:	Entrez Gene 9516 Human Q99732



[View online »](#)

Background:

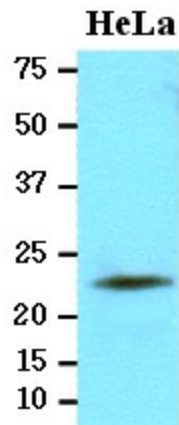
Lipopolysaccharide-induced tumor necrosis factor-alpha factor (LITAF) mediates the expression of inflammatory cytokines such as TNF-alpha in Lipopolysaccharide-induced processes. LITAF binds to STAT6B, a member of the STAT6 family forming a complex on the TNF-alpha promoter that modulates TNF activity. High levels of expression of LITAF mRNA have been observed predominantly in the placenta, peripheral blood leukocytes, lymph nodes and spleen.

Synonyms:

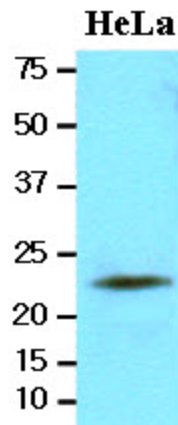
LITAF, PIG7, SIMPLE, LPS-induced TNF-alpha factor, p53-induced gene 7 protein

Protein Families:

Druggable Genome, Transcription Factors

Product images:

Cell lysates of HeLa (20ug) were resolved by SDS-PAGE, transferred to NC membrane and probed with anti-human LITAF (1:2000). Proteins were visualized using a goat anti-mouse secondary antibody conjugated to HRP and an ECL detection system.



Western blot analysis: Cell lysates of HeLa (20 ug) were resolved by SDS-PAGE, transferred to NC membrane and probed with anti-human LITAF (1:2000). Proteins were visualized using a goat anti-mouse secondary antibody conjugated to HRP and an ECL detection system.