

Product datasheet for **AM09080PU-S**

Myosin Light Chain 2 (MYL2) (1-166) Mouse Monoclonal Antibody [Clone ID: AT3B2]

Product data:

Product Type:	Primary Antibodies
Clone Name:	AT3B2
Applications:	ELISA, FC, IF, IHC, WB
Recommended Dilution:	ELISA. Western blot (1/1,000-1/2,000). Immunohistochemistry on Paraffin Sections (5 µg/ml). This MYL2 antibody was validated for use in immunohistochemistry on a panel of 21 formalin-fixed, paraffin-embedded (FFPE) human tissues after heat induced antigen retrieval in pH 6.0 citrate buffer. After incubation with the primary antibody, slides were incubated with biotinylated secondary antibody, followed by alkaline phosphatase-streptavidin and chromogen. Immunocytochemistry / Immunofluorescence. Flow Cytometry.
Reactivity:	Human, Rat
Host:	Mouse
Isotype:	IgG2b
Clonality:	Monoclonal
Immunogen:	Recombinant Human MYL2 (1-166 aa) purified from <i>E. coli</i>
Specificity:	The antibody recognizes MYL2 (1-166).
Formulation:	PBS, pH 7.4 containing 0.02% Sodium Azide and 10% Glycerol State: Purified State: Liquid purified Ig fraction
Concentration:	lot specific
Purification:	Protein-G affinity chromatography
Conjugation:	Unconjugated
Storage:	Store undiluted at 2-8°C for up to two weeks or (in aliquots) at -20°C for longer. Avoid repeated freezing and thawing.
Stability:	Shelf life: one year from despatch.
Gene Name:	myosin light chain 2



[View online »](#)

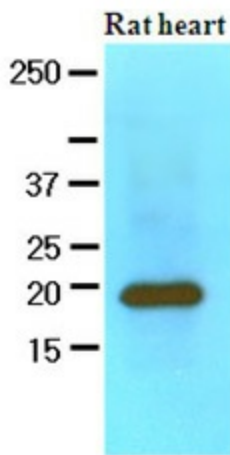
Database Link: [Entrez Gene 363925 Rat](#)[Entrez Gene 4633 Human](#)
[P10916](#)

Background: Myosin light chain 2 (MYL2) encodes the regulatory light chain associated with cardiac myosin beta heavy chain. It is an important protein involved in the regulation of myosin ATPase activity in smooth muscle and Ca⁺ triggers the phosphorylation of regulatory light chain that in turn triggers contraction. Mutations in MYL2 are associated with mid-left ventricular chamber type hypertrophic cardiomyopathy.

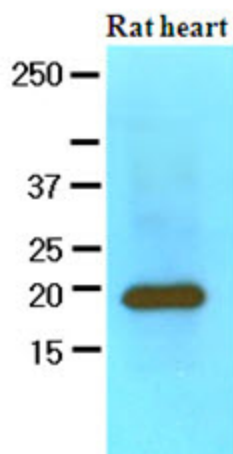
Synonyms: MLC-2v, MLC-2

Protein Pathways: Cardiac muscle contraction, Dilated cardiomyopathy, Focal adhesion, Hypertrophic cardiomyopathy (HCM), Leukocyte transendothelial migration, Regulation of actin cytoskeleton, Tight junction

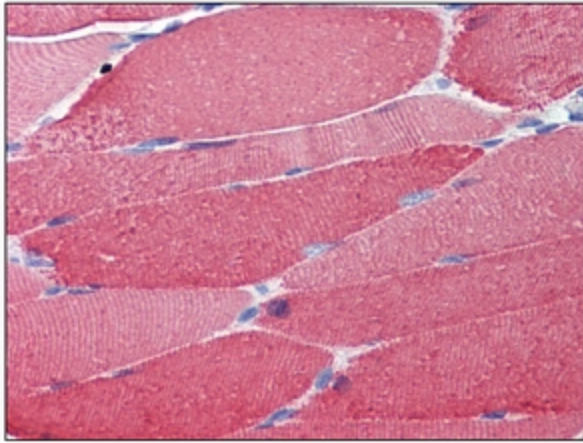
Product images:



The extracts of Rat heart (60ug) were resolved by SDS-PAGE, transferred to NC membrane and probed with anti-human MYL2 (1:1000). Proteins were visualized using a goat anti-mouse secondary antibody conjugated to HRP and an ECL detection system.



Western blot analysis: The extracts of Rat heart (60 ug) were resolved by SDS-PAGE, transferred to NC membrane and probed with anti-human MYL2 antibody (1/1000). Proteins were visualized using a goat anti-mouse secondary antibody conjugated to HRP and an ECL detection system.



Immunohistochemistry: -N MYL2 antibody staining of Formalin-Fixed, Paraffin-Embedded Human Skeletal Muscle followed by biotinylated secondary antibody, alkaline phosphatase-streptavidin and chromogen.