

Product datasheet for **AM09078PU-N**

Casein Kinase 1 alpha (CSNK1A1) Mouse Monoclonal Antibody [Clone ID: AT2E2]

Product data:

Product Type:	Primary Antibodies
Clone Name:	AT2E2
Applications:	ELISA, WB
Recommended Dilution:	ELISA. Western blot (1/1000-1/2000).
Reactivity:	Human
Host:	Mouse
Isotype:	IgG2b
Clonality:	Monoclonal
Immunogen:	Recombinant human Casein Kinase 1 alpha (1-337 aa) purified from E. coli
Specificity:	The antibody recognizes Human Casein Kinase 1 alpha. Other species not tested.
Formulation:	PBS, pH 7.4 containing 0.02% Sodium Azide and 10% Glycerol State: Purified State: Liquid purified Ig fraction
Concentration:	lot specific
Purification:	Affinity Chromatography on Protein G
Conjugation:	Unconjugated
Storage:	Store undiluted at 2-8°C for up to two weeks or (in aliquots) at -20°C for longer. Avoid repeated freezing and thawing.
Stability:	Shelf life: one year from despatch.
Gene Name:	casein kinase 1 alpha 1
Database Link:	Entrez Gene 1452 Human P48729



[View online »](#)

Background:

Casein Kinase 1 alpha belongs to the protein kinase superfamily, CK1 Ser/Thr protein kinase family, Casein kinase I subfamily. CK1 isoforms (alpha, beta, gamma, delta, epsilon) and their splice variants are involved in diverse cellular processes including membrane trafficking, circadian rhythm, cell cycle progression, chromosome segregation, apoptosis and cellular differentiation. Perhaps it can phosphorylate a large number of proteins and is involved in Wnt signaling where it phosphorylates CTNNB1 on Ser45. Casein kinase 1 alpha also interacts with the Axin complex.

Synonyms:

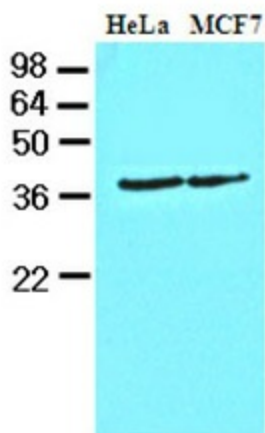
Casein kinase I alpha, CKI-alpha, CK1

Protein Families:

Druggable Genome, ES Cell Differentiation/IPS, Protein Kinase

Protein Pathways:

Hedgehog signaling pathway, Wnt signaling pathway

Product images:

Western blot analysis: Cell lysates of HeLa and MCF7 (40 ug) were resolved by SDS-PAGE, transferred to NC membrane and probed with anti-human Casein Kinase 1 alpha (1:1000). Proteins were visualized using a goat anti-mouse secondary antibody conjugated to HRP and an ECL detection system.