

## Product datasheet for **AM09077PU-N**

### GFP Mouse Monoclonal Antibody [Clone ID: AT2G5]

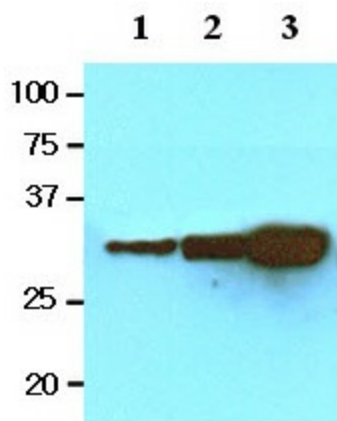
#### Product data:

Product Type:	Primary Antibodies
Clone Name:	AT2G5
Applications:	ELISA, WB
Recommended Dilution:	<b>ELISA.</b> <b>Western blot</b> (1/1,000-1/2,000).
Host:	Mouse
Isotype:	IgG2a
Clonality:	Monoclonal
Immunogen:	Recombinant GFP (1-238 aa) purified from E. coli
Specificity:	The antibody recognizes GFP from Aequorea Victoria.
Formulation:	PBS, pH 7.4 containing 0.02% Sodium Azide and 10% Glycerol State: Purified State: Liquid purified Ig fraction
Concentration:	lot specific
Purification:	Affinity Chromatography on Protein G
Conjugation:	Unconjugated
Storage:	Store undiluted at 2-8°C for up to two weeks or (in aliquots) at -20°C for longer. Avoid repeated freezing and thawing.
Stability:	Shelf life: one year from despatch.
Background:	GFP, also known as green fluorescent protein, is a protein produced by the jellyfish (Aequorea Victoria) that emits bioluminescence in the green zone of the visible spectrum. GFP has become a useful and ubiquitous tool for making chimeric proteins, where it functions as a fluorescent protein tag. It has been expressed in most known cell types and is used as a noninvasive fluorescent marker in living cells and organisms. This protein enables a wide range of applications where it has functioned as a cell lineage tracer, reporter of gene expression, or as a measure of protein-protein interactions.
Synonyms:	Green fluorescent protein, GFP-Tag



[View online »](#)

## Product images:



Western blot: The recombinant protein GFP (20, 40 and 80 ng) were resolved by SDS-PAGE, transferred to NC membrane and probed with anti-GFP antibody (1/1000). Proteins were visualized using a goat anti-Mouse secondary antibody conjugated to HRP and an ECL