

Product datasheet for **AM09075PU-S**

HOMER1 Mouse Monoclonal Antibody [Clone ID: AT1F3]

Product data:

Product Type:	Primary Antibodies
Clone Name:	AT1F3
Applications:	ELISA, WB
Recommended Dilution:	ELISA. Westernblot (1:1,000 - 1:2,000).
Reactivity:	Human, Mouse
Host:	Mouse
Isotype:	IgG2b
Clonality:	Monoclonal
Immunogen:	Recombinant human Homer1 (1-354 aa) purified from E. coli
Specificity:	The antibody recognizes human and mouse Homer1. Other species not tested.
Formulation:	PBS, pH 7.4 containing 0.02% Sodium Azide and 10% Glycerol State: Purified State: Liquid purified Ig fraction
Concentration:	lot specific
Purification:	Protein-G affinity chromatography
Conjugation:	Unconjugated
Storage:	Store undiluted at 2-8°C for up to two weeks or (in aliquots) at -20°C for longer. Avoid repeated freezing and thawing.
Stability:	Shelf life: one year from despatch.
Gene Name:	homer scaffolding protein 1
Database Link:	Entrez Gene 26556 Mouse Entrez Gene 9456 Human Q86YM7
Background:	Homer1 (Homer protein homolog 1) belongs to Homer family of proteins that regulate signal transduction through, and the trafficking of, glutamate receptors, as well as maintain and regulate extracellular glutamate levels in corticolimbic brain regions. The Homer1 is enriched at excitatory synapses and binds group 1 metabotropic glutamate receptors (mGluRs).

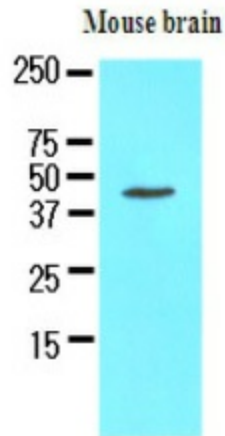


[View online »](#)

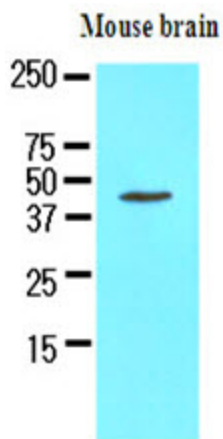
Synonyms: SYN47, HOMER-1, HOMER 1

Protein Families: Druggable Genome

Product images:



The extracts of mouse brain (50ug) were resolved by SDS-PAGE, transferred to NC membrane and probed with anti-human Homer1 (1:1000). Proteins were visualized using a goat anti-mouse secondary antibody conjugated to HRP and an ECL detection system.



Western blot analysis: The extracts of mouse brain (50 ug) were resolved by SDS-PAGE, transferred to NC membrane and probed with anti-human Homer1 (1:1000). Proteins were visualized using a goat anti-mouse secondary antibody conjugated to HRP and an ECL detection system.