

Product datasheet for **AM09074PU-S**

LANA ORF73 Mouse Monoclonal Antibody [Clone ID: AT4C11]

Product data:

Product Type:	Primary Antibodies
Clone Name:	AT4C11
Applications:	ELISA, IHC, WB
Recommended Dilution:	ELISA. Western blot (1/1000-1/2000). Immunohistochemistry on Paraffin Embedded Sections (1/50-1/100).
Reactivity:	Human
Host:	Mouse
Isotype:	IgG2a
Clonality:	Monoclonal
Immunogen:	Recombinant Human ORF73/HHV8 (122-329 aa) purified from E. coli
Specificity:	The antibody recognizes the ORF73 protein of Human herpesvirus 8 (HHV-8). Other species not tested.
Formulation:	PBS, pH 7.4 containing 0.02% Sodium Azide and 10% Glycerol State: Purified State: Liquid purified Ig fraction
Concentration:	lot specific
Conjugation:	Unconjugated
Storage:	Store undiluted at 2-8°C for up to two weeks or (in aliquots) at -20°C for longer. Avoid repeated freezing and thawing.
Stability:	Shelf life: one year from despatch.
Database Link:	Entrez Gene 4961527 Q9QR71



[View online »](#)

Background:

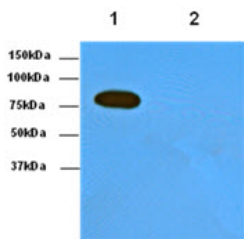
ORF73 protein of human herpesvirus 8 (HHV-8) is a Kaposi's sarcoma-associated herpesvirus (KSHV) latent protein which has been suspected of playing a crucial role in modulating viral and cellular gene expression. ORF73 is associated with cellular chromatin and stays on the chromosomes during cell division. It maintains the viral genomes during cell division by tethering the viral episomes to the chromosomes. It binds directly to replication origin recognition complexes (ORCs) that are primarily associated with the terminal repeat (TR) region of the HHV-8 genome.

Synonyms:

ORF-73, HHV-8, LANA-1, LNA, LNA1

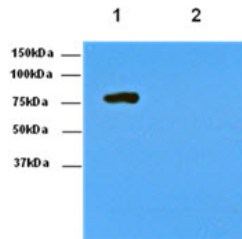
Product images:

A : ORF73/HHV8 clone AT4C11 antibody



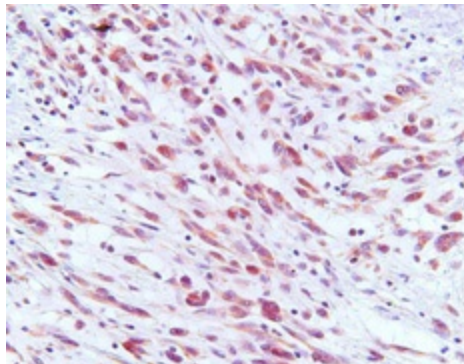
Lane 1 : 293T cell lysate transfected with ORF73/HHV8(122~329aa-MBP tagged)
Lane 2 : Non-transfected 293T cell lysate

B : MBP antibody(Cat No. AMB0710)



Lane 1 : 293T cell lysate transfected with ORF73/HHV8(122~329aa-MBP tagged)
Lane 2 : Non-transfected 293T cell lysate

Western blot analysis: Transfected and non-transfected 293T cell lysates were resolved by SDS-PAGE, transferred to NC membrane and probed with anti-ORF73/HHV8 (1:1,000) and anti-MBP (1:1,000). Proteins were visualized using a goat anti-mouse secondary antibody conjugated to HRP and an ECL detection system. Lane 1: 293T cell lysate transfected with ORF73/HHV8 (122-329aa-MBP tagged), Lane 2: Non-transfected 293T cell lysate



Immunohistochemistry : Paraffin embedded sections of Kaposi's carcinoma tissue were incubated with anti-ORF73/HHV8 (1:50) for 2 hours at room temperature. Antigen retrieval was performed in 0.1 M sodium citrate buffer and Diaminobenzidine (DAB) was used for detection.