

Product datasheet for **AM09067PU-N**

MAT2A Mouse Monoclonal Antibody [Clone ID: AT3A2]

Product data:

Product Type:	Primary Antibodies
Clone Name:	AT3A2
Applications:	ELISA, IHC, WB
Recommended Dilution:	ELISA. Western blot (1:1,000 - 1:2,000)). Immunohistochemistry on Paraffin embedded tissues (1:50 - 1:100).
Reactivity:	Human
Host:	Mouse
Isotype:	IgG2b
Clonality:	Monoclonal
Immunogen:	Recombinant human MAT2A (1-395 aa) purified from E. coli
Specificity:	The antibody recognizes human MAT2A. Other species not tested.
Formulation:	PBS, pH 7.4 containing 0.02% Sodium Azide and 10% Glycerol State: Purified State: Liquid purified Ig fraction
Concentration:	lot specific
Purification:	Protein-G affinity chromatography
Conjugation:	Unconjugated
Storage:	Store undiluted at 2-8°C for up to two weeks or (in aliquots) at -20°C for longer. Avoid repeated freezing and thawing.
Stability:	Shelf life: one year from despatch.
Gene Name:	methionine adenosyltransferase 2A
Database Link:	Entrez Gene 4144 Human P31153
Background:	Methionine adenosyltransferase II (MAT II) is a key enzyme in cellular metabolism and catalyzes the formation of S-adenosylmethionine (S-AdoMet) from L-methionine and ATP. MAT2A is expressed in extrahepatic tissues. In liver, MAT2A expression associates with growth, dedifferentiation, and cancer.

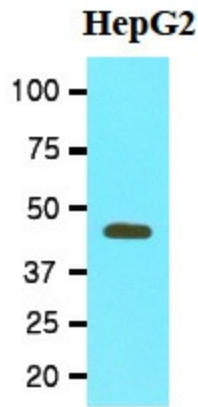


[View online »](#)

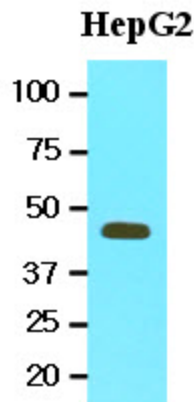
Synonyms: S-adenosylmethionine synthetase isoform type-2, AdoMet synthetase 2, AMS2, MATA2

Protein Pathways: Cysteine and methionine metabolism, Metabolic pathways, Selenoamino acid metabolism

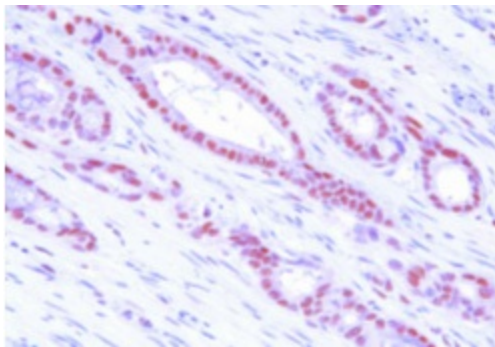
Product images:



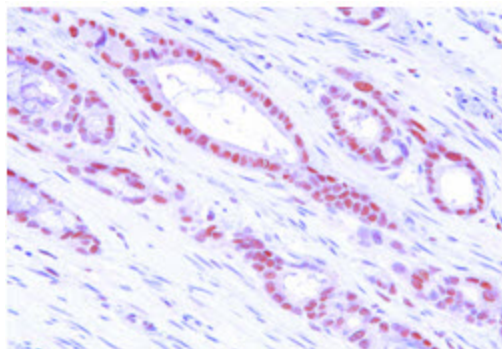
Cell lysates of HepG2 (20ug) were resolved by SDS-PAGE, transferred to NC membrane and probed with anti-human MAT2A (1:1000). Proteins were visualized using a goat anti-mouse secondary antibody conjugated to HRP and an ECL detection system.



Western blot analysis: Cell lysates of HepG2 (20 ug) were resolved by SDS-PAGE, transferred to NC membrane and probed with anti-human MAT2A (1:1000). Proteins were visualized using a goat anti-mouse secondary antibody conjugated to HRP and an ECL detection system.



Paraffin embedded sections of human colon cancer tissue were incubated with anti-human MAT2A (1:50) for 2 hours at room temperature. Antigen retrieval was performed in 0.1M sodium citrate buffer and detected using Diaminobenzidine (DAB)



Human colon cancer tissue

Immunohistochemistry: Paraffin embedded sections of human colon cancer tissue were incubated with anti-human MAT2A (1 : 50) for 2 hours at room temperature. Antigen retrieval was performed in 0.1M sodium citrate buffer and detected using Diaminobenzidine (DAB).