

## Product datasheet for **AM09065PU-S**

### **RBP4 Mouse Monoclonal Antibody [Clone ID: AT2B4]**

#### **Product data:**

|                       |  |
|-----------------------|--|
| Product Type:         | Primary Antibodies   |
| Clone Name:           | AT2B4  |
| Applications:         | ELISA, IHC, WB   |
| Recommended Dilution: | ELISA.<br>Western blot (1:500 - 1:1,000).<br>Immunohistochemistry on paraffin-embedded tissues (1:25-1:50).                |
| Reactivity:           | Human  |
| Host:                 | Mouse  |
| Isotype:              | IgG1   |
| Clonality:            | Monoclonal   |
| Immunogen:            | Recombinant human RBP4 (19-201 aa) purified from E. coli   |
| Specificity:          | The antibody recognizes human RBP4.<br>Other species not tested.   |
| Formulation:          | PBS, pH 7.4 containing 0.02% Sodium Azide and 10% Glycerol<br>State: Purified<br>State: Liquid purified Ig fraction        |
| Concentration:        | lot specific   |
| Purification:         | Protein-G affinity chromatography  |
| Conjugation:          | Unconjugated   |
| Storage:              | Store undiluted at 2-8°C for up to two weeks or (in aliquots) at -20°C for longer.<br>Avoid repeated freezing and thawing. |
| Stability:            | Shelf life: one year from despatch.  |
| Gene Name:            | retinol binding protein 4  |
| Database Link:        | <a href="#">Entrez Gene 5950 Human P02753</a>  |



[View online »](#)

**Background:**

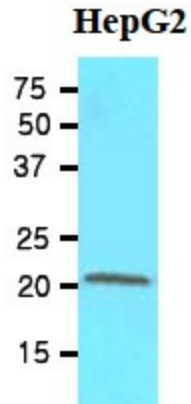
Retinol binding protein 4(RBP4) belongs to the lipocalin family and is the specific carrier for retinol in the blood. This protein was found to be expressed and secreted by adipose tissue, and was strongly associated with insulin resistance. It delivers retinol from the liver stores to the peripheral tissues. In plasma, the RBP-retinol complex interacts with transthyretin which prevents its loss by filtration through the kidney glomeruli.

**Synonyms:**

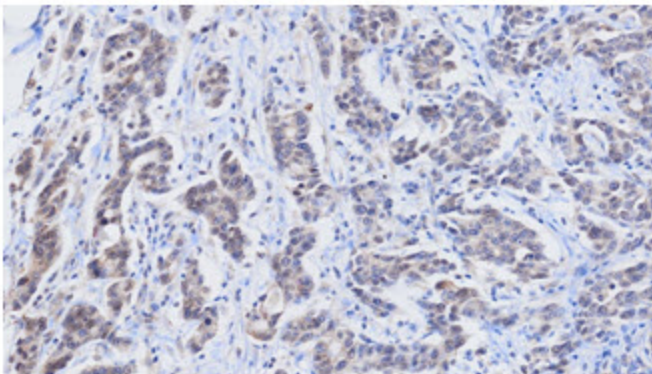
RBP-4, Retinol-binding protein 4, Plasma retinol-binding protein, PRBP, RBP

**Protein Families:**

Druggable Genome, Secreted Protein

**Product images:**

Western blot analysis: Cell lysates of HepG2 (60 ug) were resolved by SDS-PAGE, transferred to NC membrane and probed with anti-human RBP4 (1:500). Proteins were visualized using a goat anti-mouse secondary antibody conjugated to HRP and an ECL detection system.



**Human gastric cancer tissue**

Paraffin embedded sections of human gastric cancer tissue were incubated with anti-human RBP4 (1:25) for 2 hours at room temperature. Antigen retrieval was performed in 0.1M sodium citrate buffer and detected using Diaminobenzidine (DAB)