

Product datasheet for **AM09062PU-S**

CRABP2 Mouse Monoclonal Antibody [Clone ID: AT2E11]

Product data:

Product Type:	Primary Antibodies
Clone Name:	AT2E11
Applications:	ELISA, IHC, WB
Recommended Dilution:	ELISA. Western blot (1/250-1/1,000). Immunohistochemistry on Paraffin Sections (10 µg/ml). This CRABP2 antibody was validated for use in immunohistochemistry on a panel of 21 formalin-fixed, paraffin-embedded (FFPE) Human tissues after heat induced antigen retrieval in pH 6.0 citrate buffer. After incubation with the primary antibody, slides were incubated with biotinylated secondary antibody, followed by alkaline phosphatase-streptavidin and chromogen.
Reactivity:	Human, Mouse
Host:	Mouse
Isotype:	IgG2a
Clonality:	Monoclonal
Immunogen:	Recombinant Human CRABP2 (1-138aa) purified from <i>E. coli</i>
Specificity:	The antibody recognizes Human and Mouse CRABP2. Other species not tested.
Formulation:	PBS, pH 7.4 containing 0.02% Sodium Azide and 10% Glycerol State: Purified State: Liquid purified Ig fraction
Concentration:	lot specific
Purification:	Affinity Chromatography on Protein G
Conjugation:	Unconjugated
Storage:	Store undiluted at 2-8°C for up to two weeks or (in aliquots) at -20°C for longer. Avoid repeated freezing and thawing.
Stability:	Shelf life: one year from despatch.
Gene Name:	cellular retinoic acid binding protein 2



[View online »](#)

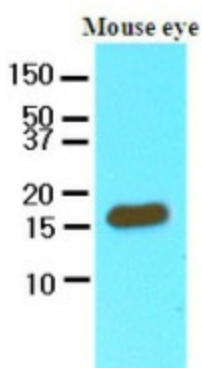
Database Link: [Entrez Gene 12904 Mouse](#)[Entrez Gene 1382 Human](#)
[P29373](#)

Background: The cellular retinoic acid-binding protein II (CRABP-II) is involved in the conversion of vitamin A into its intracellular active form retinoic acid, which regulate the genes responsible for lipid metabolism and adipocyte differentiation. CRABP2 gene is located on chromosome 1q21-23 and this region has been linked with related disorders such as familial combined hyperlipidemia (FCHL) and type 2 diabetes mellitus.

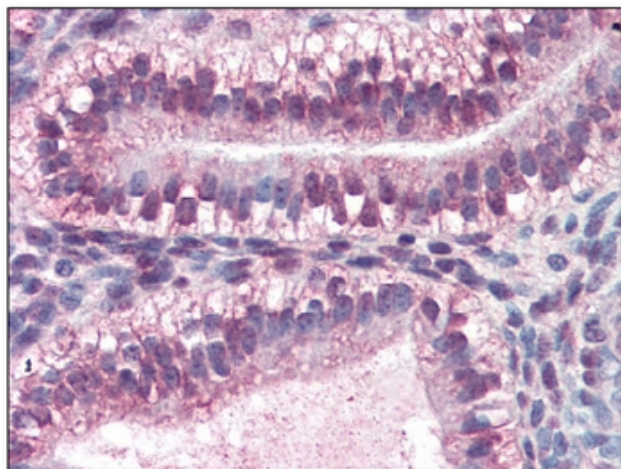
Synonyms: CRABP-II

Protein Families: Druggable Genome, Transcription Factors

Product images:



Western blot analysis: Cell lysates of mouse eye (60 ug) were resolved by SDS-PAGE, transferred to NC membrane and probed with anti-human CRABP2 antibody (1/250). Proteins were visualized using a goat anti-mouse secondary antibody conjugated to HRP and an ECL detection system.



Immunohistochemistry: -N CRABP2 antibody staining of Formalin-Fixed, Paraffin-Embedded Human Uterus at 10 ug/ml followed by biotinylated anti-Mouse IgG secondary antibody, alkaline phosphatase-streptavidin and chromogen.