

Product datasheet for **AM09060PU-S**

14-3-3 theta (YWHAQ) (1-245) Mouse Monoclonal Antibody [Clone ID: AT1A1]

Product data:

Product Type:	Primary Antibodies
Clone Name:	AT1A1
Applications:	ELISA, FC, IF, IHC, WB
Recommended Dilution:	ELISA. Western blot (1/1,000-1/2,000). Immunohistochemistry on Paraffin Sections (10 µg/ml). This YWHAQ antibody was validated for use in immunohistochemistry on a panel of 21 formalin-fixed, paraffin-embedded (FFPE) human tissues after heat induced antigen retrieval in pH 6.0 citrate buffer. After incubation with the primary antibody, slides were incubated with biotinylated secondary antibody, followed by alkaline phosphatase-streptavidin and chromogen.
	Flow cytometry. Immunofluorescence.
Reactivity:	Human
Host:	Mouse
Isotype:	IgG1
Clonality:	Monoclonal
Immunogen:	Recombinant human 14-3-3 tau (aa 1-245) purified from <i>E. coli</i>
Specificity:	The antibody recognizes Human 14-3-3 protein theta (tau) at aa 1-245. Other species not tested.
Formulation:	PBS, pH 7.4 containing 0.02% Sodium Azide and 10% Glycerol State: Purified State: Liquid purified Ig fraction
Concentration:	lot specific
Purification:	Protein-G affinity chromatography
Conjugation:	Unconjugated
Storage:	Store undiluted at 2-8°C for up to two weeks or (in aliquots) at -20°C for longer. Avoid repeated freezing and thawing.
Stability:	Shelf life: one year from despatch.



[View online »](#)

Gene Name: tyrosine 3-monooxygenase/tryptophan 5-monooxygenase activation protein theta

Database Link: [Entrez Gene 10971 Human P27348](#)

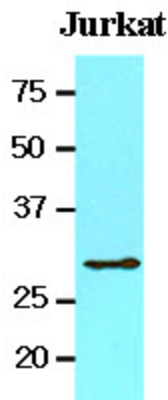
Background: The 14-3-3 family of proteins plays a key regulatory role in signal transduction, checkpoint control, apoptotic and nutrient-sensing pathways. 14-3-3 proteins are highly conserved and ubiquitously expressed. There are at least seven isoforms, beta, gamma, epsilon, sigma, zeta, tau and eta that have been identified in mammals. The 14-3-3 tau, a subtype of the 14-3-3 family of proteins, was found in T Cells, brain and testes. This 14-3-3 tau is upregulated in patients with amyotrophic lateral sclerosis.

Synonyms: 14-3-3 protein tau, 14-3-3 protein T-cell, YWHAQ, Protein HS1

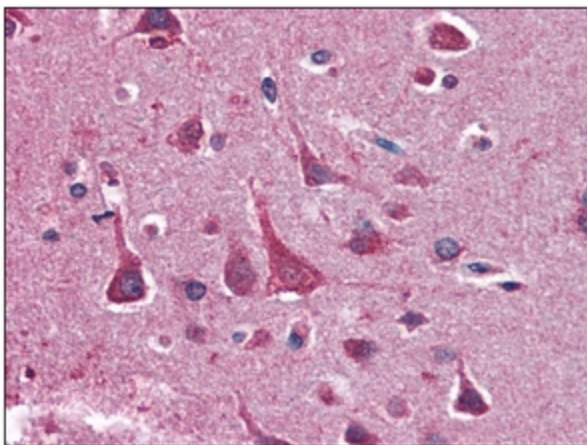
Protein Families: Druggable Genome

Protein Pathways: Cell cycle, Neurotrophin signaling pathway, Oocyte meiosis, Pathogenic Escherichia coli infection

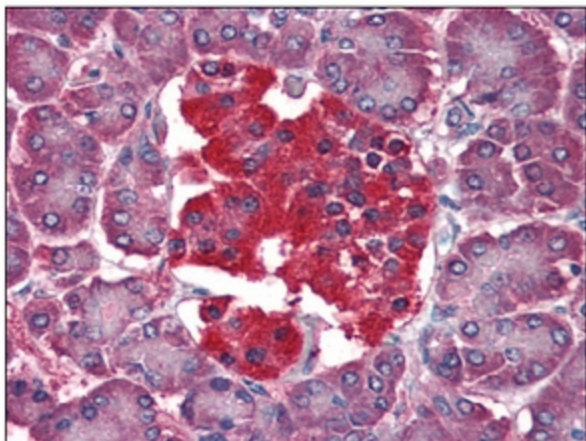
Product images:



Cell lysates of Jurkat (20ug) were resolved by SDS-PAGE, transferred to NC membrane and probed with anti-human 14-3-3 tau (1:1000). Proteins were visualized using a goat anti-mouse secondary antibody conjugated to HRP and an ECL detection system.



Immunohistochemistry: -N 14-3-3 tau antibody staining of Formalin-Fixed, Paraffin-Embedded Human Brain, Cortex.



Immunohistochemistry: -N 14-3-3 tau antibody staining of Formalin-Fixed, Paraffin-Embedded Human Pancreas.