

Product datasheet for **AM09057PU-N**

KLF4 (1-170) Mouse Monoclonal Antibody [Clone ID: AT4E6]

Product data:

| | |
|-----------------------|---|
| Product Type: | Primary Antibodies |
| Clone Name: | AT4E6 |
| Applications: | ELISA, FC, IHC, WB |
| Recommended Dilution: | ELISA. Western blot (1/1,000-1/2,000). Immunohistochemistry on Paraffin-Embedded tissues (1/50). Flow Cytometry. |
| Reactivity: | Human |
| Host: | Mouse |
| Isotype: | IgG1 |
| Clonality: | Monoclonal |
| Immunogen: | Recombinant human KLF4 (aa 1-170) purified from <i>E. coli</i> |
| Specificity: | The antibody recognizes Human KLF4 at aa 1-170. Other species not tested. |
| Formulation: | PBS, pH 7.4 containing 0.02% Sodium Azide and 10% Glycerol State: Purified State: Liquid purified Ig fraction |
| Concentration: | lot specific |
| Purification: | Protein-G affinity chromatography |
| Conjugation: | Unconjugated |
| Storage: | Store undiluted at 2-8°C for up to two weeks or (in aliquots) at -20°C for longer. Avoid repeated freezing and thawing. |
| Stability: | Shelf life: one year from despatch. |
| Gene Name: | Kruppel-like factor 4 (gut) |
| Database Link: | Entrez Gene 9314 Human O43474 |



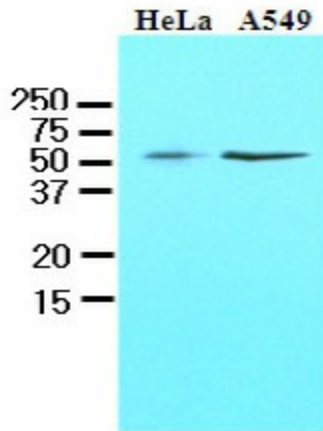
[View online »](#)

Background:

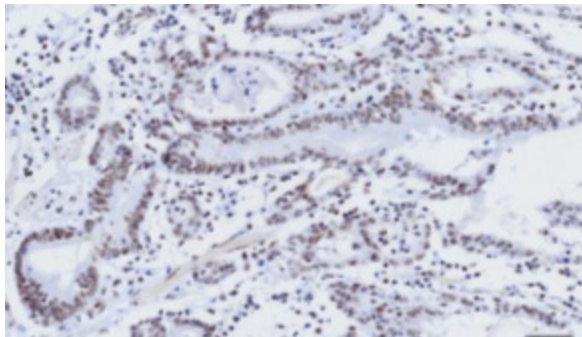
KLF4, which is also known as the gut-enriched Kruppel-like factor (GKLF), is a zinc finger-containing transcription factor that belongs to the Kruppel-like family of transcription factors. KLF4 plays important roles during the proliferation and differentiation of epithelial cells. Especially, it is found predominantly in gut and has been shown to be expressed during growth arrest. KLF4 is also involved in cell cycle control since expression of KLF4 inhibits DNA synthesis by blocking the G1/S phase of the cell cycle.

Synonyms:

EZF, GKL

Product images:

Western blot analysis: Cell lysates of HeLa and A549 (40 ug) were resolved by SDS-PAGE, transferred to NC membrane and probed with anti-human KLF4 (1:1000). Proteins were visualized using a goat anti-mouse secondary antibody conjugated to HRP and an ECL detection system.



Immunohistochemistry: Paraffin embedded sections of human gastric cancer tissue were incubated with anti-human KLF4 (1:50) for 2 hours at room temperature. Antigen retrieval was performed in 0.1 M sodium citrate buffer. Diaminobenzidine (DAB) was used for detection.