

Product datasheet for **AM09056PU-S**

Cofilin 1 (CFL1) Mouse Monoclonal Antibody [Clone ID: AT1C1]

Product data:

Product Type:	Primary Antibodies
Clone Name:	AT1C1
Applications:	ELISA, IHC, WB
Recommended Dilution:	ELISA. Western blot (1/1,000-1/2,000). Immunohistochemistry on Paraffin Sections (10 µg/ml). This Cofilin 1 antibody was validated for use in immunohistochemistry on a panel of 21 formalin-fixed, paraffin-embedded (FFPE) human tissues after heat induced antigen retrieval in pH 6.0 citrate buffer. After incubation with the primary antibody, slides were incubated with biotinylated secondary antibody, followed by alkaline phosphatase-streptavidin and chromogen.
Reactivity:	Human
Host:	Mouse
Isotype:	IgG1
Clonality:	Monoclonal
Immunogen:	Recombinant human Cofilin-1 (aa 1-166) purified from E. coli
Specificity:	The antibody recognizes Human Cofilin-1. Other species not tested.
Formulation:	PBS, pH 7.4 containing 0.02% Sodium Azide and 10% Glycerol State: Purified State: Liquid purified Ig fraction
Concentration:	lot specific
Purification:	Protein-G affinity chromatography
Conjugation:	Unconjugated
Storage:	Store undiluted at 2-8°C for up to two weeks or (in aliquots) at -20°C for longer. Avoid repeated freezing and thawing.
Stability:	Shelf life: one year from despatch.
Gene Name:	cofilin 1



[View online »](#)

Database Link: [Entrez Gene 1072 Human P23528](#)

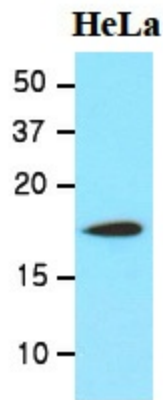
Background: Cofilin is a family of actin-binding proteins which disassembles actin filaments. It is a widely distributed intracellular actin-modulating protein that binds and depolymerizes filamentous F-actin and inhibits the polymerization of monomeric G-actin in a pH-dependent manner. It is involved in the translocation of actin-cofilin complex from cytoplasm to nucleus.

Synonyms: CFL1, CFL, p18

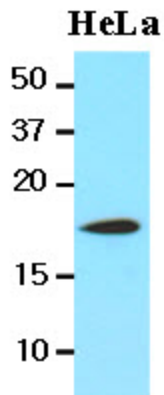
Protein Families: Druggable Genome

Protein Pathways: Axon guidance, Fc gamma R-mediated phagocytosis, Regulation of actin cytoskeleton

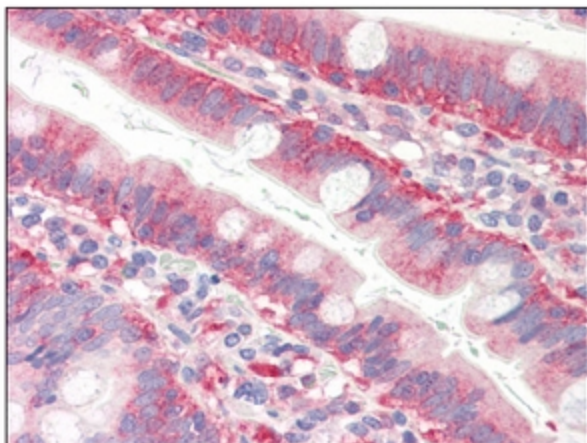
Product images:



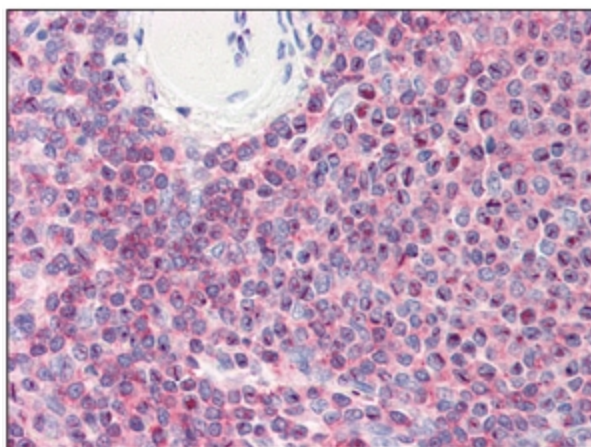
The lysates of HeLa (20ug) were resolved by SDS-PAGE, transferred to NC membrane and probed with anti-human Cofilin 1 (1:1000) antibody. Proteins were visualized using a goat anti-mouse secondary antibody conjugated to HRP and an ECL detection system.



Western blot analysis: The lysates of HeLa (20 ug) were resolved by SDS-PAGE, transferred to NC membrane and probed with anti-human Cofilin 1 antibody (1/1000). Proteins were visualized using a goat anti-mouse secondary antibody conjugated to HRP and an ECL detection system.



Immunohistochemistry: -N Cofilin 1 antibody staining of Formalin-Fixed, Paraffin-Embedded Human Small Intestine.



Immunohistochemistry: -N Cofilin 1 antibody staining of Formalin-Fixed, Paraffin-Embedded Human Spleen.