

Product datasheet for **AM09053PU-N**

WNT3A Mouse Monoclonal Antibody [Clone ID: 3A6]

Product data:

Product Type:	Primary Antibodies
Clone Name:	3A6
Applications:	ELISA, IHC, WB
Recommended Dilution:	ELISA. Western blot: 1/1000-1/2000. Immunohistochemistry on Paraffin Sections: 1/50-1/100.
Reactivity:	Human
Host:	Mouse
Isotype:	IgG2a
Clonality:	Monoclonal
Immunogen:	Recombinant human Wnt3a (aa 19-352) purified from E. coli
Specificity:	The antibody recognizes Human WNT3A. Other species not tested.
Formulation:	PBS, pH 7.4 containing 0.02% Sodium Azide and 10% Glycerol State: Purified State: Liquid purified Ig fraction
Concentration:	lot specific
Purification:	Protein-G Affinity Chromatography
Conjugation:	Unconjugated
Storage:	Store undiluted at 2-8°C for up to two weeks or (in aliquots) at -20°C for longer. Avoid repeated freezing and thawing.
Stability:	Shelf life: one year from despatch.
Gene Name:	Wnt family member 3A
Database Link:	Entrez Gene 89780 Human P56704



[View online »](#)

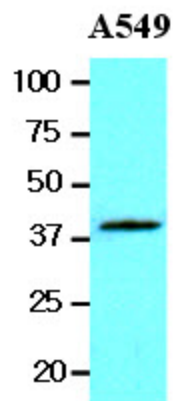
Background: Wingless-type MMTV integration site family, member 3A (Wnt3a) is a member of the Wnt family. The Wnt gene family is representative of a growing class of multifunctional factors that play a role in both tumorigenesis and patterning events required for normal differentiation and development. Wnt3a is a ligand for members of the frizzled family of seven transmembrane receptors.

Synonyms: Protein Wnt-3a

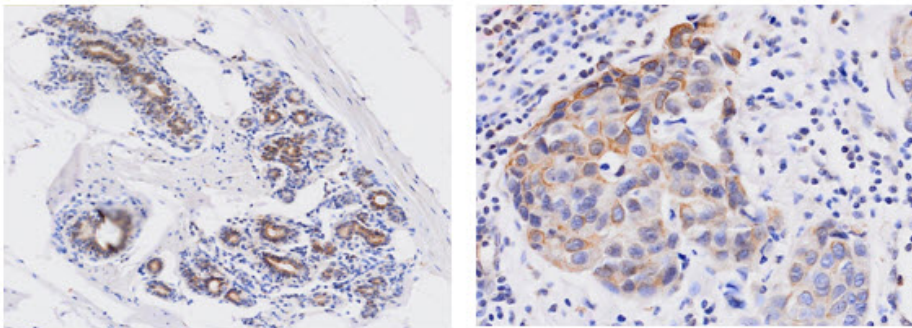
Protein Families: Adult stem cells, Cancer stem cells, Druggable Genome, ES Cell Differentiation/IPS, Induced pluripotent stem cells, Secreted Protein, Stem cell relevant signaling - Wnt Signaling pathway

Protein Pathways: Basal cell carcinoma, Hedgehog signaling pathway, Melanogenesis, Pathways in cancer, Wnt signaling pathway

Product images:



The lysates of A549 (20ug) were resolved by SDS-PAGE, transferred to NC membrane and probed with anti-human Wnt3a (1:1000). Proteins were visualized using a goat anti-mouse secondary antibody conjugated to HRP and an ECL detection system.



Human breast cancer tissue

Paraffin embedded sections of human breast cancer tissue were incubated with anti-human Wnt3a (1:50) for 2 hours at room temperature. Antigen retrieval was performed in 0.1M sodium citrate buffer and detected using Diaminobenzidine (DAB)