

## Product datasheet for **AM09051PU-S**

### VAMP3 Mouse Monoclonal Antibody [Clone ID: ATG4G9]

#### Product data:

Product Type:	Primary Antibodies
Clone Name:	ATG4G9
Applications:	ELISA, FC, WB
Recommended Dilution:	<b>ELISA.</b> <b>Western blot</b> (1/1,000-1/2,000). <b>Flow Cytometry.</b>
Reactivity:	Human, Mouse
Host:	Mouse
Isotype:	IgG2b
Clonality:	Monoclonal
Immunogen:	Recombinant human cellubrevin (aa 1-77) purified from E. coli.
Specificity:	The antibody recognizes human and mouse Cellubrevin (Synaptobrevin-3 / VAMP3). Other species not tested.
Formulation:	PBS, pH 7.4 containing 0.02% Sodium Azide and 10% Glycerol State: Purified State: Liquid purified Ig fraction
Concentration:	lot specific
Purification:	Protein-G affinity chromatography
Conjugation:	Unconjugated
Storage:	Store undiluted at 2-8°C for up to two weeks or (in aliquots) at -20°C for longer. Avoid repeated freezing and thawing.
Stability:	Shelf life: one year from despatch.
Gene Name:	vesicle associated membrane protein 3
Database Link:	<a href="#">Entrez Gene 9341 Human</a> <a href="#">Q15836</a>



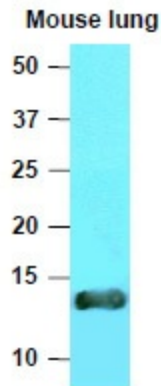
[View online »](#)

**Background:**

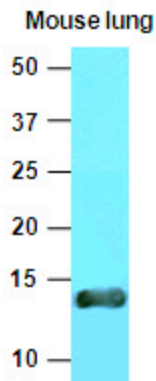
Cellubrevin, also known as VAMP3, is a member of the Vamp/synaptobrevin family. Vamps, syntaxins, and the 25-kD synaptosomal-associated protein are the main components of a protein complex involved in the docking and/or fusion of synaptic vesicles with the presynaptic membrane. Cellubrevin is a vesicular soluble N-ethylmaleimide sensitive factor attachment protein receptor (v-SNARE) homologous to the neuronal synaptobrevins 1/2 and is also a substrate of tetanus neurotoxin.

**Synonyms:**

VAMP3, Vesicle-associated membrane protein 3, SYB3, Cellubrevin, CEB

**Product images:**

The extracts of mouse lung tissue (40ug) were resolved by SDS-PAGE, transferred to NC membrane and probed with anti-human Cellubrevin (1:1000). Proteins were visualized using a goat anti-mouse secondary antibody conjugated to HRP and an ECL detection system



Western blot analysis: The extracts of mouse lung tissue (40 ug) were resolved by SDS-PAGE, transferred to NC membrane and probed with anti-human Cellubrevin (1:1000). Proteins were visualized using a goat anti-mouse secondary antibody conjugated to HRP and an ECL detection system.