

## Product datasheet for **AM09046PU-N**

### TOLLIP Mouse Monoclonal Antibody [Clone ID: k1B17]

#### Product data:

Product Type:	Primary Antibodies
Clone Name:	k1B17
Applications:	ELISA, IF, WB
Recommended Dilution:	<b>ELISA.</b> <b>Western blot</b> (1/500-1/1,000). <b>Immunofluorescence.</b>
Reactivity:	Human
Host:	Mouse
Isotype:	IgG2a
Clonality:	Monoclonal
Immunogen:	Recombinant human Tollip (61-274 aa) purified from E. coli
Specificity:	The antibody recognizes human TOLLIP. Other species not tested.
Formulation:	PBS, pH 7.4 containing 0.02% Sodium Azide and 10% Glycerol State: Purified State: Liquid purified Ig fraction
Concentration:	lot specific
Purification:	Protein-G affinity chromatography
Conjugation:	Unconjugated
Storage:	Store undiluted at 2-8°C for up to two weeks or (in aliquots) at -20°C for longer. Avoid repeated freezing and thawing.
Stability:	Shelf life: one year from despatch.
Gene Name:	toll interacting protein
Database Link:	<a href="#">Entrez Gene 54472 Human Q9H0E2</a>



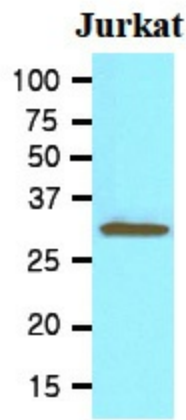
[View online »](#)

**Background:**

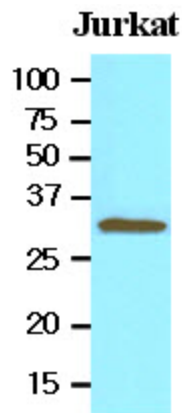
Toll interacting protein, also known as Tollip, is an inhibitory adaptor protein within the signaling pathway of IL-1 and Toll-like receptors (TLR). The Toll-like receptors are essential transmembrane signaling receptors of the innate immune system that alert the host to the presence of a microbial invader. Tollip recruits IRAK1 to the IL-1 receptor complex and inhibits IRAK1 phosphorylation and kinase activity.

**Synonyms:**

Toll-interacting protein

**Product images:**

Cell lysates of Jurkat (30ug) were resolved by SDS-PAGE, transferred to NC membrane and probed with anti-human Tollip (1:500). Proteins were visualized using a goat anti-mouse secondary antibody conjugated to HRP and an ECL detection system.



Western blot analysis: Cell lysates of Jurkat (30 ug) were resolved by SDS-PAGE, transferred to NC membrane and probed with anti-human Tollip (1:500). Proteins were visualized using a goat anti-mouse secondary antibody conjugated to HRP and an ECL detection system.