

Product datasheet for **AM09039PU-S**

UBE2L6 Mouse Monoclonal Antibody [Clone ID: k1H3]

Product data:

Product Type:	Primary Antibodies
Clone Name:	k1H3
Applications:	ELISA, IHC, WB
Recommended Dilution:	ELISA. Western blot (1:1,000 - 1:3,000), recommended starting dilution is 1:2,000. Immunohistochemistry on Paraffin embedded tissue (1:50 - 1:100).
Reactivity:	Human
Host:	Mouse
Isotype:	IgG2b
Clonality:	Monoclonal
Immunogen:	Recombinant human UBE2L6 (1-152 aa) purified from E. coli
Specificity:	The antibody recognizes human UBE2L6. Other species not tested.
Formulation:	PBS, pH 7.4 containing 0.02% Sodium Azide and 10% Glycerol State: Purified State: Liquid Ig fraction
Concentration:	lot specific
Purification:	Protein-G affinity chromatography
Conjugation:	Unconjugated
Storage:	Store undiluted at 2-8°C for up to two weeks or (in aliquots) at -20°C for longer. Avoid repeated freezing and thawing.
Stability:	Shelf life: one year from despatch.
Gene Name:	ubiquitin conjugating enzyme E2 L6
Database Link:	Entrez Gene 9246 Human Q14933



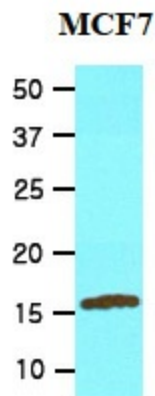
[View online »](#)

Background:

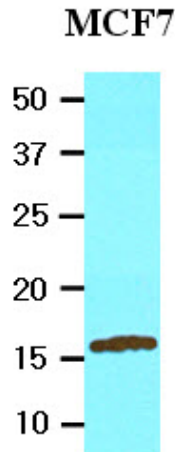
Ubiquitin-conjugating enzyme E2L6 (UBE2L6), also known as Ubch8, is a member of the E2 ubiquitin-conjugating enzyme family. The modification of proteins with ubiquitin is an important cellular mechanism for targeting abnormal or short-lived proteins for degradation. Ubiquitination of a protein substrate requires the concerted action of 3 classes of enzymes: E1 ubiquitin-activating enzymes, E2 ubiquitin-conjugating enzymes, and E3 ubiquitin protein ligases. The E2 ubiquitin-conjugating enzyme is highly similar in primary structure to the enzyme encoded by UBE2L3 gene.

Synonyms:

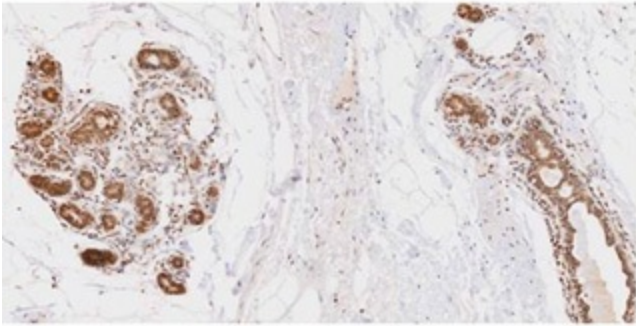
Ubiquitin/ISG15-conjugating enzyme E2 L6, Ubiquitin-protein ligase L6, Ubiquitin carrier protein L6, UBCH8

Product images:

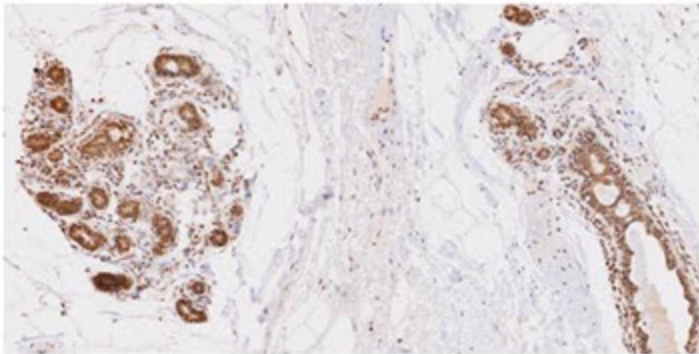
Cell lysates of MCF7 (20ug) were resolved by SDS-PAGE, transferred to NC membrane and probed with anti-human UBE2L6 (1:2000). Proteins were visualized using a goat anti-mouse secondary antibody conjugated to HRP and an ECL detection system.



Western blot analysis: Cell lysates of MCF7 (20 ug) were resolved by SDS-PAGE, transferred to NC membrane and probed with anti-human UBE2L6 (1:2000). Proteins were visualized using a goat anti-mouse secondary antibody conjugated to HRP and an ECL detection system.



Paraffin embedded sections of human breast lobule tissue were incubated with anti-human UBE2L6 (1:50) for 2 hours at room temperature. Antigen retrieval was performed in 0.1M sodium citrate buffer and detected using Diaminobenzidine (DAB)



Immunohistochemistry: Paraffin embedded sections of human breast lobule tissue were incubated with anti-human UBE2L6 (1:50) for 2 hours at room temperature. Antigen retrieval was performed in 0.1M sodium citrate buffer and detected using Diaminobenzidine (DAB).

Human breast lobule tissue