

## Product datasheet for **AM09038PU-S**

### **TDP43 (TARDBP) Mouse Monoclonal Antibody [Clone ID: k1B8]**

#### Product data:

Product Type:	Primary Antibodies
Clone Name:	k1B8
Applications:	ELISA, IHC, WB
Recommended Dilution:	<b>ELISA.</b> <b>Western blot</b> (1/1,000-1/2,000). <b>Flow Cytometry.</b> <b>Immunohistochemistry on Paraffin Sections</b> (1/50-1/100).
Reactivity:	Human
Host:	Mouse
Isotype:	IgG1
Clonality:	Monoclonal
Immunogen:	Recombinant Human TARDBP (1-260 aa) purified from <i>E. coli</i> .
Specificity:	The antibody recognizes Human TARDBP. Other species not tested.
Formulation:	PBS, pH 7.4 containing 0.02% Sodium Azide and 10% Glycerol State: Purified State: Liquid purified Ig fraction
Concentration:	lot specific
Purification:	Protein-G Affinity Chromatography
Conjugation:	Unconjugated
Storage:	Store undiluted at 2-8°C for up to two weeks or (in aliquots) at -20°C for longer. Avoid repeated freezing and thawing.
Stability:	Shelf life: one year from despatch.
Gene Name:	TAR DNA binding protein
Database Link:	<a href="#">Entrez Gene 23435 Human Q13148</a>



[View online »](#)

**Background:**

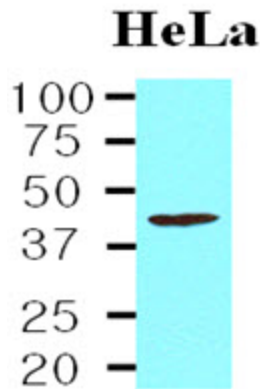
TAR DNA binding protein (TARDBP), also known as TDP-43, is a cellular protein. TARDBP was identified as the disease accumulating protein in patients with frontotemporal lobar degeneration (FTLD) with ubiquitin inclusions (FTLD-U) and in amyotrophic lateral sclerosis (ALS). TARDBP functions as a DNA-binding protein and specifically binds to the TAR DNA sequence motifs of HIV. Via this association with TAR motifs, TARDBP acts as a transcriptional repressor and inhibits HIV-1 transcription. In addition, this protein regulates alternate splicing of the cystic fibrosis transmembrane receptor (CFTR) gene.

**Synonyms:**

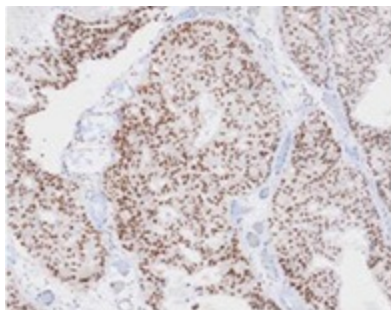
TDP43, TDP-43

**Protein Families:**

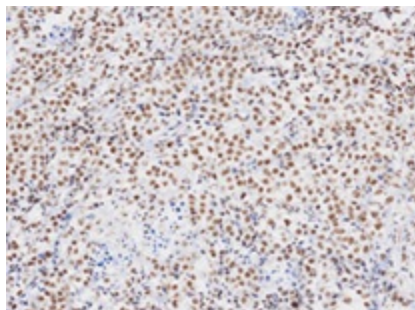
Transcription Factors

**Product images:**


Western blot analysis: Cell lysates of HeLa (20 ug) were resolved by SDS-PAGE, transferred to NC membrane and probed with anti-human TARDBP (1/1,000). Proteins were visualized using HRP conjugated Goat anti-Mouse secondary antibody and an ECL detection system.



Immunohistochemistry: Paraffin Embedded Sections of Human prostate cancer were incubated with anti-Human TARDBP antibody (1/50) for 2 hours at RT. Antigen retrieval was performed in 0.1 M sodium citrate buffer and detected using Diaminobenzidine (DAB).



Immunohistochemistry: Paraffin Embedded Sections of Human seminoma tissue were incubated with anti-Human TARDBP antibody (1/50) for 2 hours at RT. Antigen retrieval was performed in 0.1 M sodium citrate buffer and detected using Diaminobenzidine (DAB).