

Product datasheet for **AM09036PU-S**

STEAP1 Mouse Monoclonal Antibody [Clone ID: J2D2]

Product data:

Product Type:	Primary Antibodies
Clone Name:	J2D2
Applications:	ELISA, IF, IHC, WB
Recommended Dilution:	ELISA. Western blot: 1/1000-1/2000. Immunofluorescence: 1/100-1/300. Immunohistochemistry on Paraffin Sections: 1/50-1/100.
Reactivity:	Human, Rat
Host:	Mouse
Isotype:	IgG2b
Clonality:	Monoclonal
Immunogen:	Recombinant Human STEAP1 (1-70 aa) purified from E. coli
Specificity:	The antibody recognizes STEAP1.
Formulation:	PBS, pH 7.4 containing 0.02% Sodium Azide and 10% Glycerol State: Purified State: Liquid purified Ig fraction
Concentration:	lot specific
Purification:	Affinity Chromatography on Protein G
Conjugation:	Unconjugated
Storage:	Store undiluted at 2-8°C for up to two weeks or (in aliquots) at -20°C for longer. Avoid repeated freezing and thawing.
Stability:	Shelf life: one year from despatch.
Gene Name:	six transmembrane epithelial antigen of the prostate 1
Database Link:	Entrez Gene 26872 Human Q9UHE8



[View online »](#)

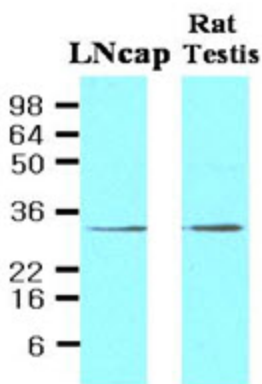
Background:

Six-transmembrane epithelial antigen of the prostate (STEAP) is expressed predominantly in human prostate tissue and in other common malignancies including prostate, bladder, colon, and ovarian carcinomas, and in Ewing's sarcoma, suggesting that it could function as an almost universal tumor antigen. Immunohistochemical analysis indicated STEAP-1 localization at cell-cell junctions of the secretory epithelium of prostate and prostate cancer cells. The favorable expression profiling of STEAP-1 in normal and cancer tissues suggested its potential use as a target for immunotherapy.

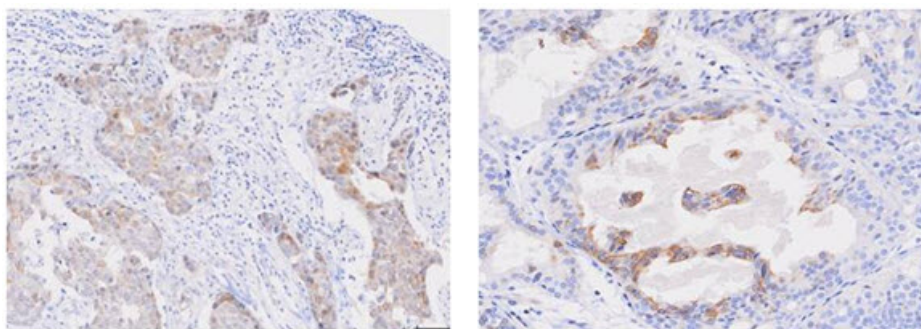
NCBI Accession No: NP_036581

Synonyms:

STEAP-1, Metalloreductase STEAP1, PRSS24

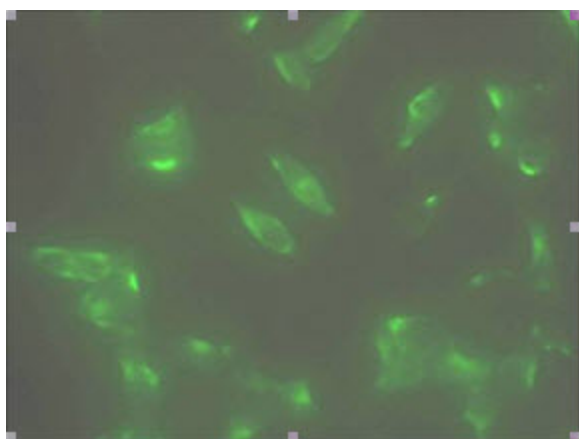
Product images:


Western blot analysis: Cell lysates of LNCap (30 ug) and Rat testis (30 ug) were resolved by SDS-PAGE, transferred to NC membrane and probed with anti-human STEAP1 antibody (Clone J2D2) (1/500). Proteins were visualized using a goat anti-mouse secondary antibody conjugated to HRP and an ECL detection system.



Human breast cancer tissue (left) and prostate hyperplasia tissue (right)

Immunohistochemistry: Paraffin embedded sections of human breast cancer and prostate hyperplasia tissue were incubated with anti-human STEAP1 antibody (Clone J2D2) (1/50) for 2 hours at room temperature. Antigen retrieval was performed in 0.1M sodium citrate buffer and detected using Diaminobenzidine (DAB)



Immunofluorescence staining of human LNCap cell colony with monoclonal anti-human STEAP1 antibody (Clone J2D2)