

## Product datasheet for **AM09034PU-S**

### SNAP25 Mouse Monoclonal Antibody [Clone ID: 4E11]

#### Product data:

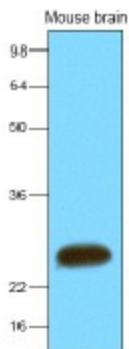
Product Type:	Primary Antibodies
Clone Name:	4E11
Applications:	ELISA, WB
Recommended Dilution:	ELISA. Western blot (1:1,000 - 1:3,000), recommended starting dilution is 1:2,000.
Reactivity:	Human, Mouse
Host:	Mouse
Isotype:	IgG1
Clonality:	Monoclonal
Immunogen:	Recombinant human SNAP25 (1-206 aa) purified from E. coli
Specificity:	The antibody recognizes human and mouse SNAP25. Other species not tested.
Formulation:	PBS, pH 7.4 containing 0.02% Sodium Azide and 10% Glycerol State: Purified State: Liquid purified Ig fraction
Concentration:	lot specific
Purification:	Protein-G affinity chromatography
Conjugation:	Unconjugated
Storage:	Store undiluted at 2-8°C for up to two weeks or (in aliquots) at -20°C for longer. Avoid repeated freezing and thawing.
Stability:	Shelf life: one year from despatch.
Gene Name:	synaptosome associated protein 25kDa
Database Link:	<a href="#">Entrez Gene 6616 Human P60880</a>
Background:	The synaptosomal-associated protein (SNAP25) is an essential component of the core complex that mediates presynaptic vesicle trafficking. Thus, SNAP25 is directly involved in the release of neurotransmitters.



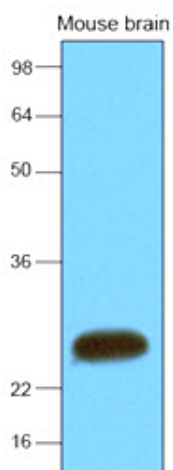
[View online »](#)

Synonyms: SNAP-25, SUP, SNAP, Super Protein, RIC4, ric-4

### Product images:



The extracts of mouse brain (30ug) were resolved by SDS-PAGE, transferred to NC membrane and probed with anti-human SNAP25 (1:2000). Proteins were visualized using a goat anti-mouse secondary antibody conjugated to HRP and an ECL detection system.



Western blot analysis: Extracts of mouse brain (30 ug) were resolved by SDS-PAGE, transferred to NC membrane and probed with anti-human SNAP25 (1:2000). Proteins were visualized using a goat anti-mouse secondary antibody conjugated to HRP and an ECL detection system.