

## Product datasheet for **AM09034PU-N**

### SNAP25 Mouse Monoclonal Antibody [Clone ID: 4E11]

#### Product data:

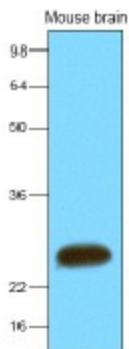
|                       |  |
|-----------------------|--|
| Product Type:         | Primary Antibodies   |
| Clone Name:           | 4E11   |
| Applications:         | ELISA, WB  |
| Recommended Dilution: | ELISA.<br>Western blot (1:1,000 - 1:3,000), recommended starting dilution is 1:2,000.  |
| Reactivity:           | Human, Mouse   |
| Host:                 | Mouse  |
| Isotype:              | IgG1   |
| Clonality:            | Monoclonal   |
| Immunogen:            | Recombinant human SNAP25 (1-206 aa) purified from E. coli  |
| Specificity:          | The antibody recognizes human and mouse SNAP25.<br>Other species not tested.   |
| Formulation:          | PBS, pH 7.4 containing 0.02% Sodium Azide and 10% Glycerol<br>State: Purified<br>State: Liquid purified Ig fraction  |
| Concentration:        | lot specific   |
| Purification:         | Protein-G affinity chromatography  |
| Conjugation:          | Unconjugated   |
| Storage:              | Store undiluted at 2-8°C for up to two weeks or (in aliquots) at -20°C for longer.<br>Avoid repeated freezing and thawing.   |
| Stability:            | Shelf life: one year from despatch.  |
| Gene Name:            | synaptosome associated protein 25kDa   |
| Database Link:        | <a href="#">Entrez Gene 6616 Human P60880</a>  |
| Background:           | The synaptosomal-associated protein (SNAP25) is an essential component of the core complex that mediates presynaptic vesicle trafficking. Thus, SNAP25 is directly involved in the release of neurotransmitters. |



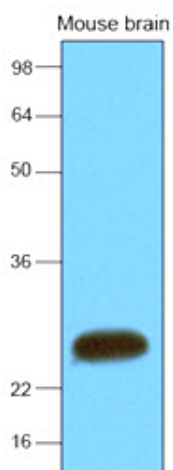
[View online »](#)

Synonyms: SNAP-25, SUP, SNAP, Super Protein, RIC4, ric-4

### Product images:



The extracts of mouse brain (30ug) were resolved by SDS-PAGE, transferred to NC membrane and probed with anti-human SNAP25 (1:2000). Proteins were visualized using a goat anti-mouse secondary antibody conjugated to HRP and an ECL detection system.



Western blot analysis: Extracts of mouse brain (30 ug) were resolved by SDS-PAGE, transferred to NC membrane and probed with anti-human SNAP25 (1:2000). Proteins were visualized using a goat anti-mouse secondary antibody conjugated to HRP and an ECL detection system.