

## Product datasheet for **AM09033PU-N**

### alpha Synuclein (SNCA) (also beta reactive) Mouse Monoclonal Antibody [Clone ID: 3B6]

#### Product data:

Product Type:	Primary Antibodies
Clone Name:	3B6
Applications:	ELISA, FC, IF, WB
Recommended Dilution:	<b>ELISA.</b> <b>Western blot</b> (1/1,000-1/2,000). <b>Flow Cytometry.</b> <b>Immunofluorescence.</b>
Reactivity:	Human, Mouse, Rat
Host:	Mouse
Isotype:	IgG1
Clonality:	Monoclonal
Immunogen:	Recombinant human $\alpha$ -synuclein (119-140aa) purified from E. coli
Specificity:	The antibody recognizes $\alpha, \beta$ - Synuclein.
Formulation:	PBS, pH 7.4 containing 0.02% Sodium Azide and 10% Glycerol State: Purified State: Liquid purified Ig fraction
Concentration:	lot specific
Purification:	Protein-G affinity chromatography
Conjugation:	Unconjugated
Storage:	Store undiluted at 2-8°C for up to two weeks or (in aliquots) at -20°C for longer. Avoid repeated freezing and thawing.
Stability:	Shelf life: one year from despatch.
Gene Name:	synuclein alpha
Database Link:	<a href="#">Entrez Gene 6622 Human P37840</a>



[View online »](#)

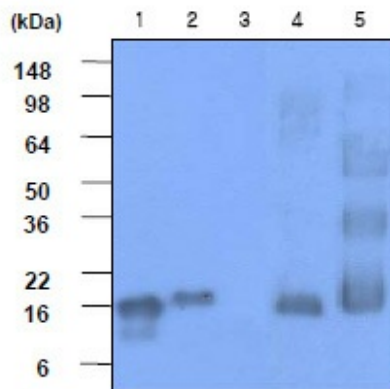
**Background:**

$\alpha$ -synuclein (amino acids 119-140), an acidic neuronal protein of 140 amino acids, is extremely heat-resistant and is natively unfolded with an extended structure primarily composed of random coils.  $\alpha$ -synuclein has been suggested to be implicated in the pathogenesis of Parkinson's disease and related neurodegenerative disorders, and more recently, to be an important regulatory component of vesicular transport in neuronal cells. Specially, the non-A $\beta$  component of amyloid plaques is a highly amyloidogenic peptide consisting of 35 amino acids which was first identified associated with senile plaques in the Alzheimer's disease brain.

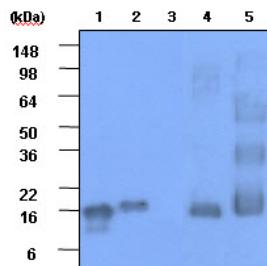
**Synonyms:**

NACP, PARK1

**Product images:**



The recombinant human synuclein family (alpha-, beta- and gamma-) (each 20ng), Mouse brain and Rat brain (30ug) were resolved by SDS-PAGE, transferred to PVDF membrane and probed with anti-human alpha, beta-synuclein (1:1000). Proteins were visualized using a goat anti-mouse secondary antibody conjugated to HRP and an ECL detection system.



Lane1 :  $\alpha$ - synuclein  
 Lane2 :  $\beta$ - synuclein  
 Lane3 :  $\gamma$ - synuclein  
 Lane4 : Mouse brain  
 Lane5 : Rat brain

Western blot analysis: Lane 1 =  $\alpha$ - synuclein, Lane 2 =  $\beta$ - synuclein, Lane 3 =  $\gamma$ - synuclein, Lane 4 = Mouse brain, Lane 5 = Rat brain. The recombinant human synuclein family ( $\alpha$ -,  $\beta$ - and  $\gamma$ -) (each 20 ng), Mouse brain and Rat brain (30 ug) were resolved by SDS-PAGE, transferred to PVDF membrane and probed with anti-human  $\alpha$ -synuclein (1:1000). Proteins were visualized using a goat anti-mouse secondary antibody conjugated to HRP and an ECL detection system.