

## Product datasheet for **AM09029PU-S**

### PSMA (FOLH1) Mouse Monoclonal Antibody [Clone ID: k1H7]

#### Product data:

Product Type:	Primary Antibodies
Clone Name:	k1H7
Applications:	ELISA, IHC, WB
Recommended Dilution:	<b>ELISA.</b> <b>Western blot:</b> 1/1,000-1/3,000 (recommended starting dilution is 1/2,000). <b>Immunohistochemistry on Paraffin Sections:</b> 5 µg/ml after heat induced antigen retrieval in pH 6.0 citrate buffer.
Reactivity:	Human
Host:	Mouse
Isotype:	IgG1
Clonality:	Monoclonal
Immunogen:	Recombinant Human PSMA (117-351 aa) purified from <i>E. coli</i>
Specificity:	The antibody recognizes Human PSMA. Other species not tested.
Formulation:	PBS, pH 7.4 containing 0.02% Sodium Azide and 10% Glycerol State: Purified State: Liquid purified IgG fraction
Concentration:	lot specific
Purification:	Affinity Chromatography on Protein G
Conjugation:	Unconjugated
Storage:	Store undiluted at 2-8°C for up to two weeks or (in aliquots) at -20°C for longer. Avoid repeated freezing and thawing.
Stability:	Shelf life: one year from despatch.
Gene Name:	folate hydrolase (prostate-specific membrane antigen) 1
Database Link:	<a href="#">Entrez Gene 2346 Human Q04609</a>



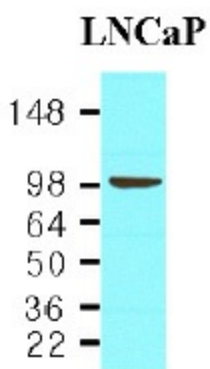
[View online »](#)

**Background:**

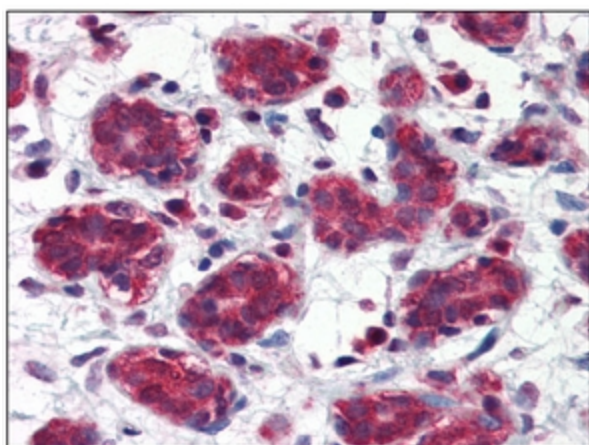
Prostate-specific membrane antigen (PSMA) is a 100-120 kDa type II transmembrane glycoprotein that is a glutamate-preferring carboxy-peptidase. Three functionally distinct proteins are encoded, including folylpoly-gamma-glutamate carboxypeptidase in the intestine, N-acetylated alpha-linked acidic dipeptidase 1 in the brain, and prostate-specific membrane antigen in the prostate. PSMA is highly expressed in prostate secretory-acinar epithelium, in some benign extraprostatic epithelial cells from breast, duodenum, and kidney tissues, and in prostate cancer.

**Synonyms:**

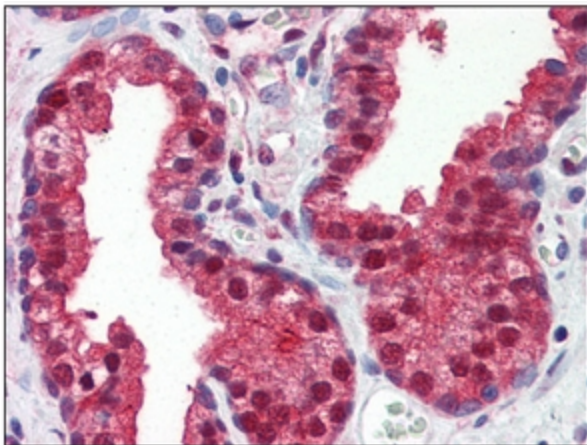
Glutamate carboxypeptidase 2, Folate hydrolase 1, Prostate-specific membrane antigen, FOLH, NAALAD1, PSM, GCP2, NAALAdase

**Product images:**

Western blot analysis: Cell lysates of LNCaP (30 ug) were resolved by SDS-PAGE, transferred to NC membrane and probed with anti-human PSMA antibody (1/1,000). Proteins were visualized using a goat anti-mouse secondary antibody conjugated to HRP and an ECL detection system.



Immunohistochemistry: -N PSMA antibody staining of Formalin-Fixed, Paraffin-Embedded Human Breast at 5 ug/ml after heat-induced antigen retrieval.



Immunohistochemistry: -N PSMA antibody staining of Formalin-Fixed, Paraffin-Embedded Human Prostate at 5 ug/ml after heat-induced antigen retrieval.