

Product datasheet for **AM09024PU-N**

NSD3 (WHSC1L1) Mouse Monoclonal Antibody [Clone ID: 2E9]

Product data:

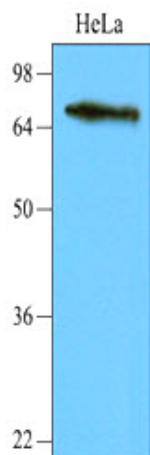
Product Type:	Primary Antibodies
Clone Name:	2E9
Applications:	ELISA, WB
Recommended Dilution:	ELISA. Western blot: 1/1,000-1/3,000 (1/2,000 as recommended starting dilution).
Reactivity:	Human
Host:	Mouse
Isotype:	IgG2b
Clonality:	Monoclonal
Immunogen:	Recombinant Human NSD3 (383-660 aa) purified from E. coli
Specificity:	The antibody recognizes human NSD3. Other species not tested.
Formulation:	PBS, pH 7.4 containing 0.02% Sodium Azide and 10% Glycerol State: Purified State: Liquid purified Ig fraction
Concentration:	lot specific
Purification:	Protein-G Affinity Chromatography
Conjugation:	Unconjugated
Storage:	Store undiluted at 2-8°C for up to two weeks or (in aliquots) at -20°C for longer. Avoid repeated freezing and thawing.
Stability:	Shelf life: one year from despatch.
Gene Name:	Wolf-Hirschhorn syndrome candidate 1-like 1
Database Link:	Entrez Gene 54904 Human Q9BZ95
Background:	This gene encoding NSD3 is related to the Wolf-Hirschhorn syndrome candidate - 1 gene and encodes a protein with PWWP (proline-tryptophan-tryptophan-proline) domains. NSD3 is a Histone methyltransferase which preferentially methylates 'Lys-4' and 'Lys-27' of histone H3 and is amplified in several tumor cell lines and primary breast carcinomas.



[View online »](#)

Synonyms: Wolf-Hirschhorn syndrome candidate 1-like protein 1, Whistle, DC28

Product images:



Western blot analysis on HeLa cells: Cell lysates of HeLa (40 ug) were resolved by SDS-PAGE, transferred to NC membrane and probed with anti-human NSD3 (1:2,000). Proteins were visualized using a goat anti-mouse secondary antibody conjugated to HRP and an ECL detection system.