

Product datasheet for **AM09022PU-S**

maIE Mouse Monoclonal Antibody [Clone ID: 10C12]

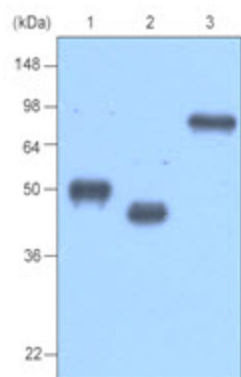
Product data:

Product Type:	Primary Antibodies
Clone Name:	10C12
Applications:	ELISA, WB
Recommended Dilution:	ELISA. Western blot: 1/1,000-1/2,000.
Host:	Mouse
Isotype:	IgG1
Clonality:	Monoclonal
Immunogen:	Recombinant MBP purified from E. coli
Formulation:	PBS, pH 7.4 containing 0.02% Sodium Azide and 10% Glycerol State: Purified State: Liquid purified Ig fraction
Concentration:	lot specific
Purification:	Affinity Chromatography on Protein G
Conjugation:	Unconjugated
Storage:	Store undiluted at 2-8°C for up to two weeks or (in aliquots) at -20°C for longer. Avoid repeated freezing and thawing.
Stability:	Shelf life: one year from despatch.
Database Link:	<u>P0AEX9</u>
Background:	Epitope tagging offers an easy and universal strategy for the identification and purification of proteins derived by recombinant DNA technology. The insertion of a Maltose Binding Protein (MBP) tag creates a stable fusion product that does not interfere with the bioactivity of the protein or with the biodistribution of the MBP tagged product.
Synonyms:	MMBP, Maltodextrin-binding protein, maIE-Tag



[View online »](#)

Product images:



Western blot analysis: Recombinant protein MBP-tagged BCDEF (Lane 1), TPD52 (Lane 2) and MAGEA3 (Lane 3) (each 20 ng) were resolved by SDS-PAGE, transferred to PVDF membrane and probed with anti-MBP (1:1000). Proteins were visualized using a goat anti-mouse