

## Product datasheet for **AM09021PU-S**

### ISG15 (1-157) Mouse Monoclonal Antibody [Clone ID: 3E5]

#### Product data:

Product Type:	Primary Antibodies
Clone Name:	3E5
Applications:	ELISA, IF, WB
Recommended Dilution:	<b>ELISA.</b> <b>Western blot</b> (1:1,000 - 1:2,000). <b>Immunocytochemistry / Immunofluorescence.</b>
Reactivity:	Human
Host:	Mouse
Isotype:	IgG1
Clonality:	Monoclonal
Immunogen:	Recombinant human ISG15 (1-157 aa) purified from E. coli
Specificity:	The antibody recognizes human ISG15. Other species not tested.
Formulation:	PBS, pH 7.4 containing 0.02% Sodium Azide and 10% Glycerol State: Purified State: Liquid purified Ig fraction
Concentration:	lot specific
Purification:	Protein-G affinity chromatography
Conjugation:	Unconjugated
Storage:	Store undiluted at 2-8°C for up to two weeks or (in aliquots) at -20°C for longer. Avoid repeated freezing and thawing.
Stability:	Shelf life: one year from despatch.
Gene Name:	ISG15 ubiquitin-like modifier
Database Link:	<a href="#">Entrez Gene 9636 Human P05161</a>



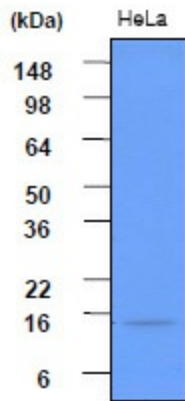
[View online »](#)

**Background:**

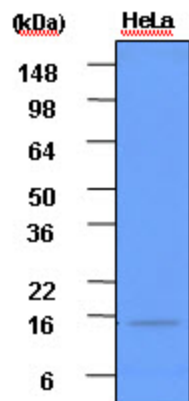
ISG15, a 15 kDa protein encoded by an interferon stimulated gene, and its modification system play important roles in the innate immune response, regulation of interferon signaling, pregnancy, and several cancers. ISG15 is an ubiquitin-like protein containing two ubiquitin homology domains and becomes conjugated to a variety of proteins when cells are treated with type I interferon or lipopolysaccharide.

**Synonyms:**

UCRP

**Product images:**

Cell lysates of HeLa (each 50ug) were resolved by SDS-PAGE, transferred to PVDF membrane and probed with anti-human ISG15 (1:1,000). Proteins were visualized using a goat anti-mouse secondary antibody conjugated to HRP and an ECL detection system



Western blot analysis: Cell lysates of HeLa (each 50 ug) were resolved by SDS-PAGE, transferred to PVDF membrane and probed with anti-human ISG15 (1:1000). Proteins were visualized using a goat anti-mouse secondary antibody conjugated to HRP and an ECL detection system.