

## Product datasheet for **AM09018PU-N**

### Heat Shock Protein 90 / HSP90 (alpha + beta) Mouse Monoclonal Antibody [Clone ID: 4F10]

#### Product data:

Product Type:	Primary Antibodies
Clone Name:	4F10
Applications:	ELISA, IHC, WB
Recommended Dilution:	ELISA. Western blot (1:1,000 - 1: 2,000). Immunohistochemistry (1:100 - 1:200).
Reactivity:	Human
Host:	Mouse
Isotype:	IgG2b
Clonality:	Monoclonal
Immunogen:	Recombinant human Hsp90 (1-732 aa) purified from E.coli
Specificity:	The antibody recognizes human Hsp90. Other species not tested.
Formulation:	PBS, pH 7.4 containing 0.02% Sodium Azide and 10% Glycerol State: Purified State: Liquid purified Ig fraction
Concentration:	lot specific
Purification:	Protein-G affinity chromatography
Conjugation:	Unconjugated
Storage:	Store undiluted at 2-8°C for up to two weeks or (in aliquots) at -20°C for longer. Avoid repeated freezing and thawing.
Stability:	Shelf life: one year from despatch.
Gene Name:	heat shock protein 90kDa alpha family class A member 1
Database Link:	<a href="#">Entrez Gene 3320 Human P07900</a>



[View online »](#)

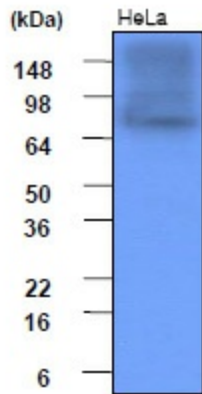
**Background:** Hsp90 is a human heat shock protein. In response to adverse change in their environment, cell from all organisms increase the expression of a class of proteins referred to as heat shock or stress protein. The Hsp90, a highly conserved stress-induced protein, is abundantly expressed in most tissues under non-stress conditions and is required for eukaryotic cell viability. Hsp90 is primarily a cytoplasmic protein and its function remains unknown. It exists in a dimeric form and has been observed to bind to several other cellular proteins such as retro-virus kinases, steroid receptor, heme-regulated protein kinase, actin and tubulin.

**Synonyms:** HSP90AB1, HSP90B, HSPC2, HSPCB, HSP84, HSP-90, HSP-84, Heat shock protein HSP 90-beta, HSP84, HSP-84, HSP90AA1, HSP90A, HSPC1, HSPCA, HSP86, HSP-86, Renal carcinoma antigen NY-REN-38, Heat shock protein HSP 90-alpha, HSP86, HSP-86

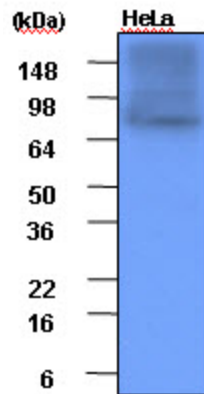
**Protein Families:** Druggable Genome

**Protein Pathways:** Antigen processing and presentation, NOD-like receptor signaling pathway, Pathways in cancer, Progesterone-mediated oocyte maturation, Prostate cancer

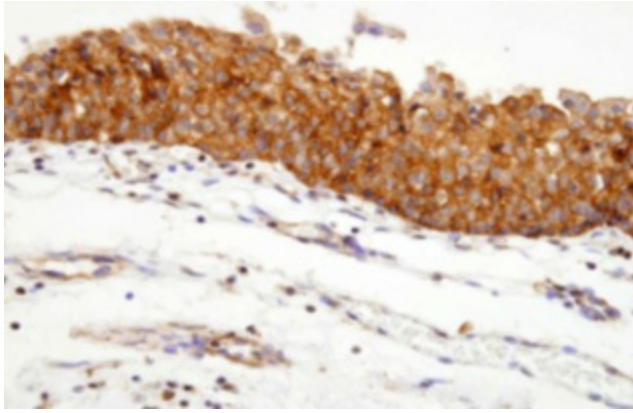
**Product images:**



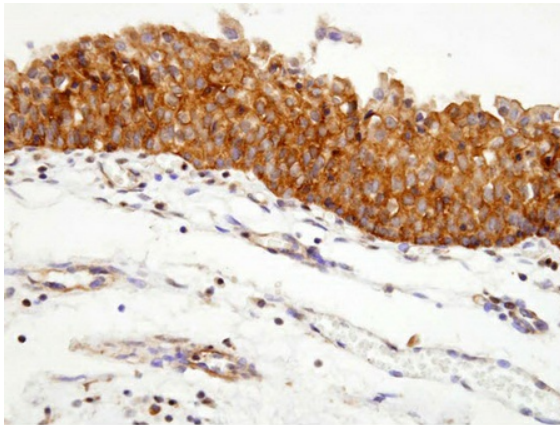
Cell lysates of HeLa (each 20ug) were resolved by SDS-PAGE, transferred to PVDF membrane and probed with anti-human Hsp90 (1:1,000). Proteins were visualized using a goat anti-mouse secondary antibody conjugated to HRP and an ECL detection system.



Western blot analysis: Cell lysates of HeLa (each 20 ug) were resolved by SDS-PAGE, transferred to PVDF membrane and probed with anti-human Hsp90 (1:1000). Proteins were visualized using a goat anti-mouse secondary antibody conjugated to HRP and an ECL det



Paraffin embedded sections of human urothelium were incubated with anti-human Hsp90 (1:100) for 2 hours at room temperature. Antigen retrieval was performed in 0.1M sodium citrate buffer and detected using Diaminobenzidine (DAB)



Immunohistochemistry: Paraffin embedded sections of human urothelium were incubated with anti-human Hsp90 (1:100) for 2 hours at room temperature. Antigen retrieval was performed in 0.1 M sodium citrate buffer and detected using Diaminobenzidine (DAB).

Human urothelium