

Product datasheet for **AM09012PU-S**

GSK3 beta (GSK3B) Mouse Monoclonal Antibody [Clone ID: 1F7]

Product data:

Product Type:	Primary Antibodies
Clone Name:	1F7
Applications:	ELISA, WB
Recommended Dilution:	ELISA. Western blot (1:1,000 - 1:2,000).
Reactivity:	Human
Host:	Mouse
Isotype:	IgG1
Clonality:	Monoclonal
Immunogen:	Recombinant human GSK3 β (341-420 aa) purified from E. coli
Specificity:	The antibody recognizes human GSK3 β . Other species not tested.
Formulation:	PBS, pH 7.4 containing 0.02% Sodium Azide and 10% Glycerol State: Purified State: Liquid purified Ig fraction
Concentration:	lot specific
Purification:	Protein-G affinity chromatography
Conjugation:	Unconjugated
Storage:	Store undiluted at 2-8°C for up to two weeks or (in aliquots) at -20°C for longer. Avoid repeated freezing and thawing.
Stability:	Shelf life: one year from despatch.
Gene Name:	glycogen synthase kinase 3 beta
Database Link:	Entrez Gene 2932 Human P49841



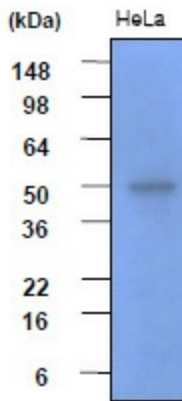
[View online »](#)

Background:

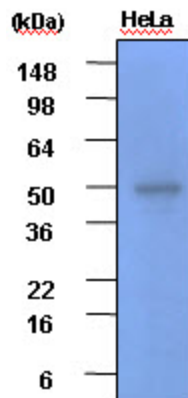
Glycogen synthase kinase 3 β (GSK3 β) is a serine/threonine kinase involved in insulin, growth factor and Wnt signaling. Glycogen synthase kinase 3 β (GSK3 β) is a molecular regulator of cell fate in the central nervous system and a target of the phosphatidylinositol 3-kinase (PI3K) pathway. It is an enzyme with a diverse number of actions in intracellular signaling systems, regulating neuronal plasticity, gene expression and cell survival.

Synonyms:

GSK-3 beta, Glycogen synthase kinase-3 beta, GSK3B

Product images:

Cell lysates of HeLa (30ug) were resolved by SDS-PAGE, transferred to PVDF membrane and probed with anti-human GSK3beta (1:2000). Proteins were visualized using a goat anti-mouse secondary antibody conjugated to HRP and an ECL detection system.



Western blot analysis: Cell lysates of HeLa (each 30 ug) were resolved by SDS-PAGE, transferred to PVDF membrane and probed with anti-human GSK3 β (1:2000). Proteins were visualized using a goat anti-mouse secondary antibody conjugated to HRP and an ECL detection system.