

## Product datasheet for **AM09011PU-N**

### **liver FABP (FABP1) Mouse Monoclonal Antibody [Clone ID: 2G4]**

#### **Product data:**

Product Type:	Primary Antibodies
Clone Name:	2G4
Applications:	ELISA, FC, IF, IHC, WB
Recommended Dilution:	<b>ELISA.</b> <b>Western blot:</b> 1/1,000-1/2,000. <b>Flow Cytometry.</b> <b>Immunofluorescence.</b> <b>Immunohistochemistry on Paraffin Sections:</b> 1/100-1/300.
Reactivity:	Human
Host:	Mouse
Isotype:	IgG1
Clonality:	Monoclonal
Immunogen:	Recombinant Human FABP1 (1-127 aa) purified from <i>E. coli</i> .
Specificity:	The antibody recognizes Human FABP1. Other species not tested.
Formulation:	PBS, pH 7.4 containing 0.02% Sodium Azide and 10% Glycerol State: Purified State: Liquid purified Ig fraction
Concentration:	lot specific
Purification:	Affinity Chromatography on Protein G
Conjugation:	Unconjugated
Storage:	Store undiluted at 2-8°C for up to two weeks or (in aliquots) at -20°C for longer. Avoid repeated freezing and thawing.
Stability:	Shelf life: one year from despatch.
Gene Name:	fatty acid binding protein 1
Database Link:	<a href="#">Entrez Gene 2168 Human P07148</a>



[View online »](#)

**Background:**

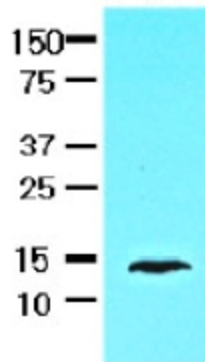
FABP1 (Fatty acid binding protein1) encodes the fatty acid binding protein found in liver. FABP1 is composed of ten antiparallel  $\beta$  strands that form a barrel with a bigger binding pocket than the other FABPs allowing it to accommodate two fatty acid. This protein binds free fatty acids and their coenzyme A derivatives, bilirubin, and some other small molecules in the cytoplasm; it may be involved in intracellular lipid transport and metabolism.

**Synonyms:**

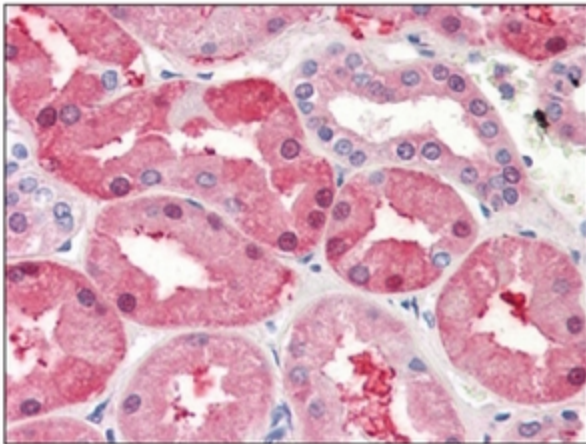
FABPL, L-FABP, Liver-type fatty acid-binding protein

**Protein Pathways:**

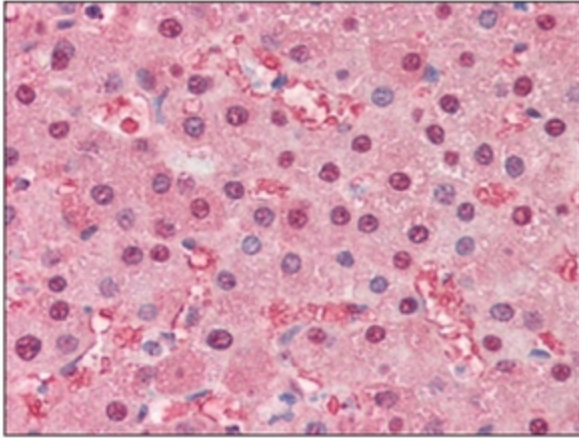
PPAR signaling pathway

**Product images:**

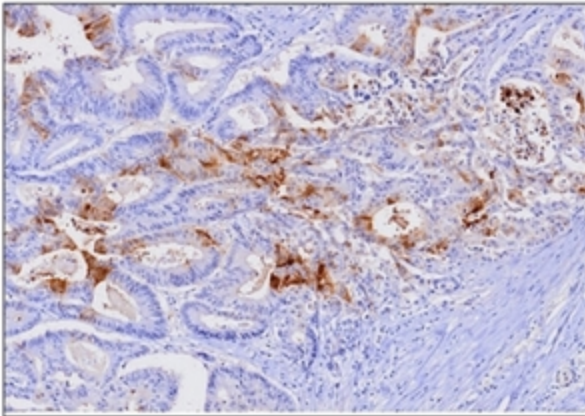
Western blot analysis on HepG2 cells: Cell lysates of HepG2 (30 ug) were resolved by SDS-PAGE, transferred to NC membrane and probed with anti-Human FABP1 (1/1000). Proteins were visualized using a goat anti-mouse secondary antibody conjugated to HRP and an ECL detection system.



Immunohistochemistry: FABP1 antibody staining of Formalin-Fixed, Paraffin-Embedded Human Kidney at 5 ug/ml followed by biotinylated anti-mouse IgG secondary antibody, alkaline phosphatase-streptavidin and chromogen.



Immunohistochemistry: FABP1 antibody staining of Formalin-Fixed, Paraffin-Embedded Human Liver at 5 ug/ml followed by biotinylated anti-mouse IgG secondary antibody, alkaline phosphatase-streptavidin and chromogen.



Immunohistochemistry: FABP1 antibody staining of Formalin-Fixed, Paraffin-Embedded Human Colon Cancer Tissue at 1/1000 for 2 hours at room temperature. Antigen retrieval was performed in 0.1M sodium citrate buffer and detected using Diaminobenzidine (DAB).