

## Product datasheet for **AM09006PU-S**

### Cathepsin L (CTSL) Mouse Monoclonal Antibody [Clone ID: 2H7]

#### Product data:

|                       |  |
|-----------------------|--|
| Product Type:         | Primary Antibodies   |
| Clone Name:           | 2H7  |
| Applications:         | ELISA, IHC, WB   |
| Recommended Dilution: | <b>ELISA.</b><br><b>Western blot:</b> 1/1000-1/2000.<br><b>Immunohistochemistry on Paraffin Sections:</b> 5 µg/ml. Heat induced antigen retrieval in pH 6.0 citrate buffer is recommended. |
| Reactivity:           | Human  |
| Host:                 | Mouse  |
| Isotype:              | IgG2b  |
| Clonality:            | Monoclonal   |
| Immunogen:            | Recombinant Human Cathepsin L (114-333 aa) purified from <i>E. coli</i>  |
| Specificity:          | The antibody recognizes Human Cathepsin L.<br>Other species not tested.  |
| Formulation:          | PBS, pH 7.4 containing 0.02% Sodium Azide and 10% Glycerol<br>State: Purified<br>State: Liquid purified Ig fraction  |
| Concentration:        | lot specific   |
| Purification:         | Protein-G affinity chromatography  |
| Conjugation:          | Unconjugated   |
| Storage:              | Store undiluted at 2-8°C for up to two weeks or (in aliquots) at -20°C for longer.<br>Avoid repeated freezing and thawing.   |
| Stability:            | Shelf life: one year from despatch.  |
| Gene Name:            | cathepsin L  |
| Database Link:        | <a href="#">Entrez Gene 1514 Human P07711</a>  |



[View online »](#)

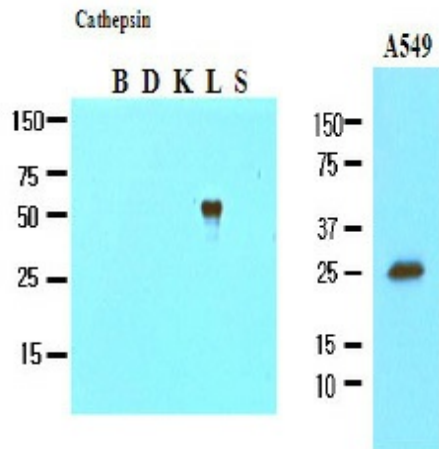
**Background:**

Cathepsin L, a lysosomal endopeptidase expressed in most eukaryotic cells, is a member of the papain-like family of cysteine proteinases. Cathepsin L can be induced by many different signaling events, including growth factor, secondary messenger and tumor promoters. Cathepsin L is translated as pre-procathepsin L, transferred through the Golgi apparatus as procathepsin L and then stored in lysosomes as mature cathepsin L.

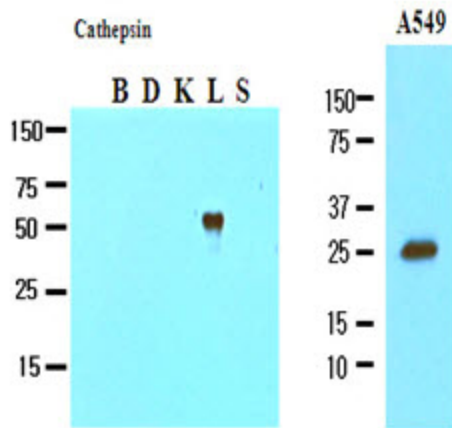
**Synonyms:**

CTSL1, CTSL, MEP, Cathepsin-L1

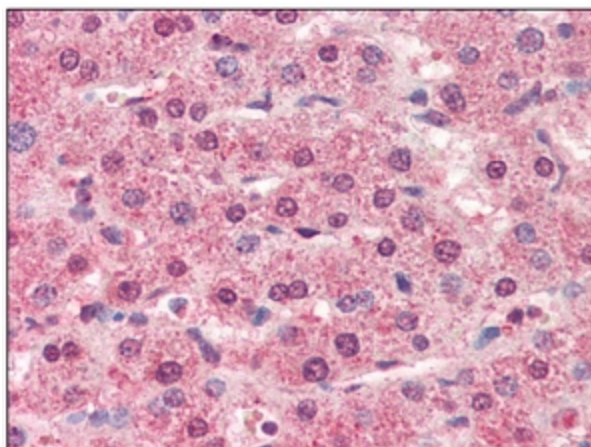
**Product images:**



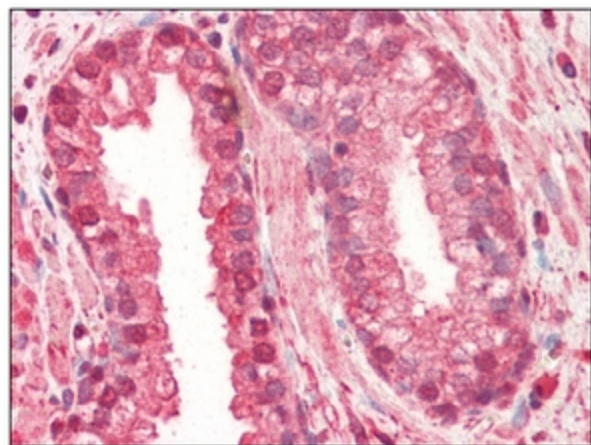
The recombinant fusion proteins (Cathepsin B, D, k, L and S), and cell lysates of A549 (20ug) were resolved by SDS-PAGE, transferred to NC membrane and probed with anti-human Cathepsin L (1:1000). Proteins were visualized using a goat anti-mouse secondary antibody conjugated to HRP and an ECL detection system.



Western blot analysis: The recombinant fusion proteins (Cathepsin B, D, K, L and S), and cell lysates of A549 (20 ug) were resolved by SDS-PAGE, transferred to NC membrane and probed with anti-Human Cathepsin L antibody (1/1000). Proteins were visualized using a goat anti-mouse secondary antibody conjugated to HRP and an ECL detection system.



Immunohistochemistry: -N Cathepsin L antibody staining of Formalin-Fixed, Paraffin-Embedded Human Liver at 5 ug/ml followed by biotinylated anti-mouse IgG secondary antibody, alkaline phosphatase-streptavidin and chromogen.



Immunohistochemistry: -N Cathepsin L antibody staining of Formalin-Fixed, Paraffin-Embedded Human Prostate at 5 ug/ml followed by biotinylated anti-mouse IgG secondary antibody, alkaline phosphatase-streptavidin and chromogen.