

Product datasheet for **AM09006PU-N**

Cathepsin L (CTSL) Mouse Monoclonal Antibody [Clone ID: 2H7]

Product data:

Product Type:	Primary Antibodies
Clone Name:	2H7
Applications:	ELISA, IHC, WB
Recommended Dilution:	ELISA. Western blot: 1/1000-1/2000. Immunohistochemistry on Paraffin Sections: 5 µg/ml. Heat induced antigen retrieval in pH 6.0 citrate buffer is recommended.
Reactivity:	Human
Host:	Mouse
Isotype:	IgG2b
Clonality:	Monoclonal
Immunogen:	Recombinant Human Cathepsin L (114-333 aa) purified from <i>E. coli</i>
Specificity:	The antibody recognizes Human Cathepsin L. Other species not tested.
Formulation:	PBS, pH 7.4 containing 0.02% Sodium Azide and 10% Glycerol State: Purified State: Liquid purified Ig fraction
Concentration:	lot specific
Purification:	Protein-G affinity chromatography
Conjugation:	Unconjugated
Storage:	Store undiluted at 2-8°C for up to two weeks or (in aliquots) at -20°C for longer. Avoid repeated freezing and thawing.
Stability:	Shelf life: one year from despatch.
Gene Name:	cathepsin L
Database Link:	Entrez Gene 1514 Human P07711



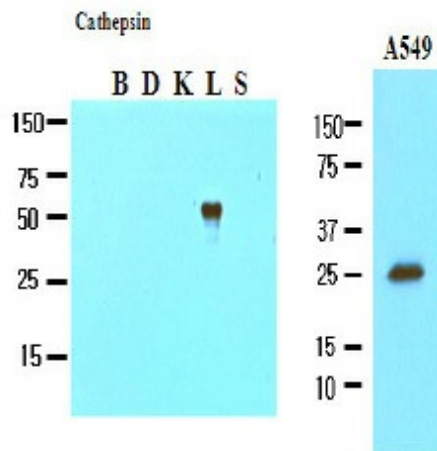
[View online »](#)

Background:

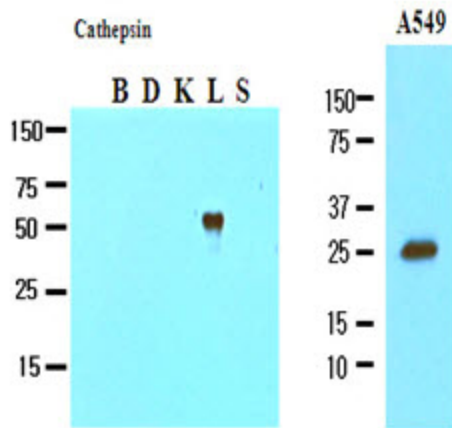
Cathepsin L, a lysosomal endopeptidase expressed in most eukaryotic cells, is a member of the papain-like family of cysteine proteinases. Cathepsin L can be induced by many different signaling events, including growth factor, secondary messenger and tumor promoters. Cathepsin L is translated as pre-procathepsin L, transferred through the Golgi apparatus as procathepsin L and then stored in lysosomes as mature cathepsin L.

Synonyms:

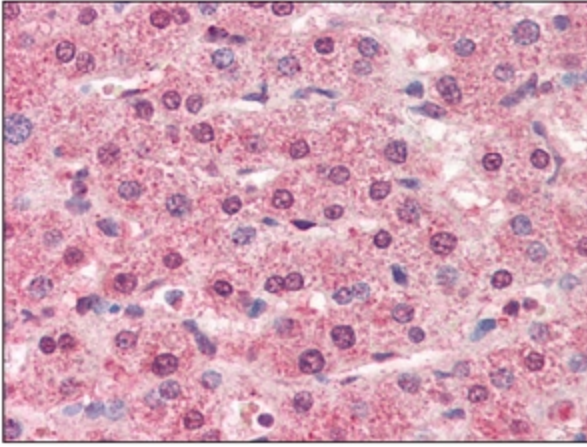
CTSL1, CTSL, MEP, Cathepsin-L1

Product images:


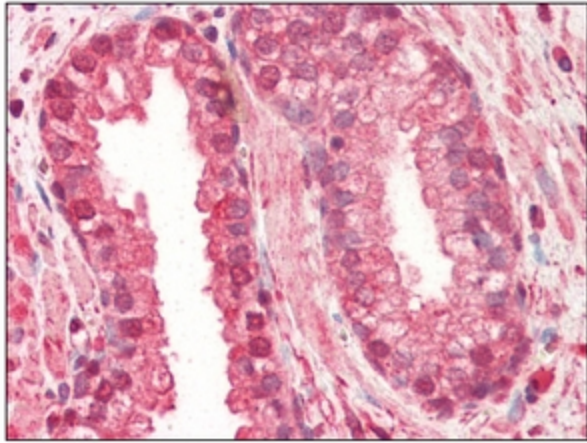
The recombinant fusion proteins (Cathepsin B, D, k, L and S), and cell lysates of A549 (20ug) were resolved by SDS-PAGE, transferred to NC membrane and probed with anti-human Cathepsin L (1:1000). Proteins were visualized using a goat anti-mouse secondary antibody conjugated to HRP and an ECL detection system.



Western blot analysis: The recombinant fusion proteins (Cathepsin B, D, K, L and S), and cell lysates of A549 (20 ug) were resolved by SDS-PAGE, transferred to NC membrane and probed with anti-Human Cathepsin L antibody (1/1000). Proteins were visualized using a goat anti-mouse secondary antibody conjugated to HRP and an ECL detection system.



Immunohistochemistry: Cathepsin L antibody staining of Formalin-Fixed, Paraffin-Embedded Human Liver at 5 ug/ml followed by biotinylated anti-mouse IgG secondary antibody, alkaline phosphatase-streptavidin and chromogen.



Immunohistochemistry: Cathepsin L antibody staining of Formalin-Fixed, Paraffin-Embedded Human Prostate at 5 ug/ml followed by biotinylated anti-mouse IgG secondary antibody, alkaline phosphatase-streptavidin and chromogen.