

Product datasheet for **AM09004PU-S**

Clusterin (CLU) Mouse Monoclonal Antibody [Clone ID: 1A11]

Product data:

Product Type:	Primary Antibodies
Clone Name:	1A11
Applications:	ELISA, FC, IF, IHC, WB
Recommended Dilution:	ELISA. Western blot (1/1,000-1/2,000). Flow Cytometry. Immunohistochemistry on Paraffin Sections (1/100-1/200). Immunofluorescence/Immunocytochemistry.
Reactivity:	Human
Host:	Mouse
Isotype:	IgG1
Clonality:	Monoclonal
Immunogen:	Recombinant Human Clusterin (1-333 aa) purified from <i>E. coli</i> .
Specificity:	The antibody recognizes Human Clusterin. Other species not tested.
Formulation:	PBS, pH 7.4 containing 0.02% Sodium Azide and 10% Glycerol State: Purified State: Liquid purified Ig fraction
Concentration:	lot specific
Purification:	Affinity Chromatography on Protein G
Conjugation:	Unconjugated
Storage:	Store undiluted at 2-8°C for up to two weeks or (in aliquots) at -20°C for longer. Avoid repeated freezing and thawing.
Stability:	Shelf life: one year from despatch.
Gene Name:	clusterin
Database Link:	Entrez Gene 1191 Human P10909



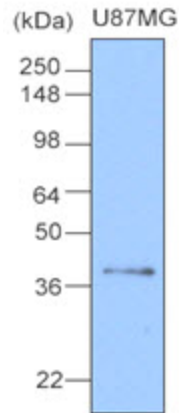
[View online »](#)

Background:

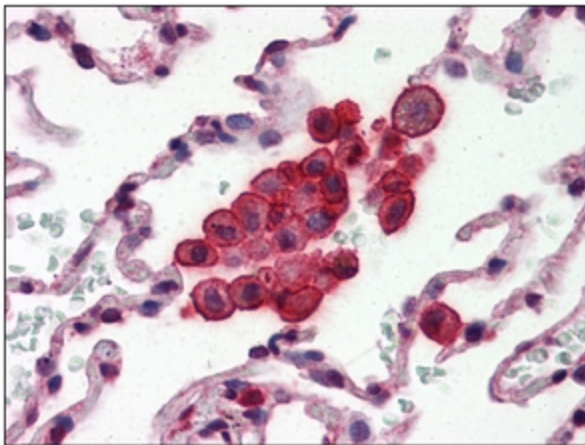
Clusterin has been implicated in numerous processes including active cell death, immune regulation, cell adhesion and morphological transformation. Clusterin (previously named SP-40) is a glycoprotein, 80 kDa comprising two distinct 40kDa polypeptide chains. It shows marked similarity, both physicochemically and in immunohistological distribution, to the single chain, 80kDa, Sprotein, an additional component of the SC5b-9 complex. Clusterin is a secreted glycoprotein of which the exact function remains a matter for speculation.

Synonyms:

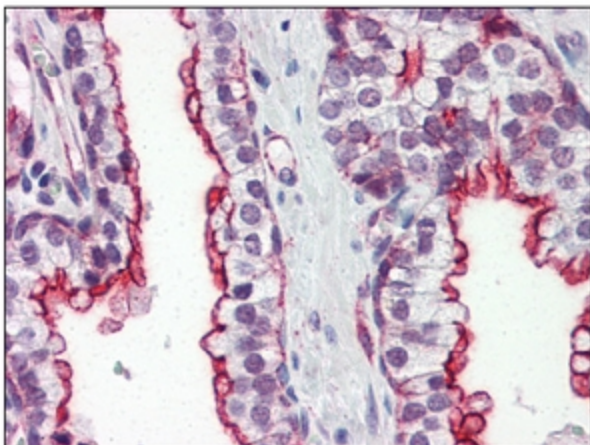
Clusterin, APOJ, CLI, KUB1, AAG4, NA1/NA2, SP-40,40

Product images:

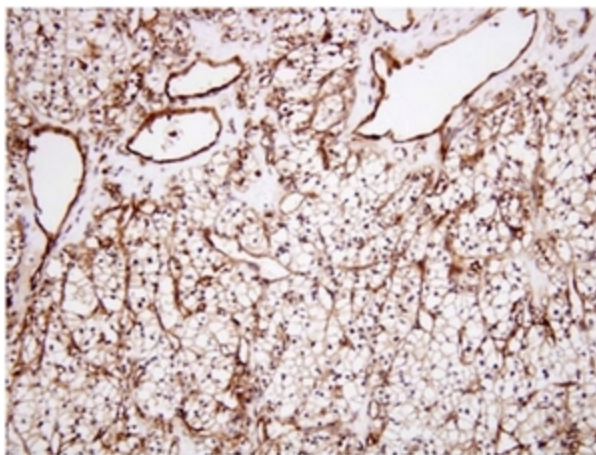
Western blot analysis: Cell lysates of U87MG (20ug) were resolved by SDS-PAGE, transferred to NC membrane and probed with anti-Human Clusterin antibody -N (1/1000). Proteins were visualized using a Goat anti-Mouse secondary antibody conjugated to HRP and an ECL detection system.



Immunohistochemistry: -N Clusterin antibody staining of Formalin-Fixed, Paraffin-Embedded Human Lung at 10 ug/ml followed by biotinylated anti-Mouse IgG secondary antibody, Alkaline Phosphatase-Streptavidin and chromogen.



Immunohistochemistry: -N Clusterin antibody staining of Formalin-Fixed, Paraffin-Embedded Human Prostate at 10 ug/ml followed by biotinylated anti-Mouse IgG secondary antibody, Alkaline Phosphatase-Streptavidin and chromogen.



Immunohistochemistry: Paraffin embedded sections of human renal cell carcinoma tissue were incubated with anti-human Clusterin antibody -N (1/100) for 2 hours at room temperature. Antigen retrieval was performed in 0.1 M sodium citrate buffer and detected using Diaminobenzidine (DAB).