

## Product datasheet for **AM08479SU-N**

### MTBP (667-812) Mouse Monoclonal Antibody [Clone ID: PHL-1]

#### Product data:

Product Type:	Primary Antibodies
Clone Name:	PHL-1
Applications:	ELISA, WB
Recommended Dilution:	ELISA: 1:2,000 - 1:20,000. Western blot: 1:200 - 1:2,000.
Reactivity:	Chimpanzee, Human
Host:	Mouse
Isotype:	IgG1
Clonality:	Monoclonal
Immunogen:	Recombinant amino-terminal HIS6X-tagged polypeptide corresponding to amino acid residues 667-812 of human MTBP protein
Specificity:	This antibody is directed against human MTBP protein.
Formulation:	0.02 M Potassium Phosphate, 0.15 M Sodium Chloride, pH 7.2, 0.01% (w/v) Sodium Azide State: Ascites State: Liquid sterile filtered Ig fraction
Purification:	Protein A chromatography
Conjugation:	Unconjugated
Storage:	Store the antibody at 2 °C to 8 °C up to one month or (in aliquots) at -20 °C to -70 °C for longer. Avoid repeated freezing and thawing. Centrifuge product if not completely clear after standing at room temperature.
Stability:	Shelf life: one year from despatch.
Gene Name:	MDM2 binding protein
Database Link:	<a href="#">Entrez Gene 27085 Human Q96DY7</a>



[View online »](#)

**Background:**

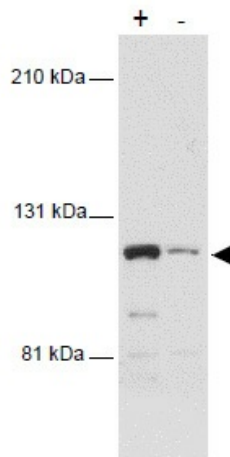
The MDM2 onco-protein is over expressed in human cancer cells and it promotes tumorigenesis by directly blocking the function of the p53 tumor suppressor. Studies also indicate that MDM2 regulates cell proliferation via p53 independent mechanisms. MTBP (Mdm2 [Two] Binding Protein) was identified by a yeast two-hybrid screen as an MDM2 binding protein (1). MTBP has been reported to modulate cell cycle progression by a p53 independent mechanism and suppress MDM2-mediated p53 degradation when ectopically expressed in cells (1,2). The human MTBP gene localizes to 8q24 (3) and MTBP RNA is expressed in a wide range of tissues, with highest being in the thymus, testes and ovaries (1).

**Synonyms:**

Mdm2-binding protein, hMTBP, Mdm2

**Note:**

Cross reactivity with MTBP protein from mouse (77% homology) and chicken (79% homology) is unlikely due to the relatively low number of positive residues and high number of gaps within this sequence.

**Product images:**

Western blot using anti-MTBP antibody shows detection of a band ~110 kDa corresponding to human MTBP (arrowhead). Lanes represent human 293 cell lysates with (+) and without (-) transfection with a full-length human expression MTBP construct. The transfected cell extract was diluted 30 fold in extract lacking transfected MTBP. Proteins were separated by SDS-PAGE and transferred onto PDVF membrane. After blocking, the membrane was probed with the primary antibody diluted to 1:500 for 2h at room temperature followed by detection using a Lumi-LightPlus Western Blotting Kit (Roche).