

Product datasheet for **AM08399PU-N**

SLC2A2 Mouse Monoclonal Antibody [Clone ID: 5D1]

Product data:

Product Type:	Primary Antibodies
Clone Name:	5D1
Applications:	FC, IF, IHC
Recommended Dilution:	Flow Cytometry: Immunocytochemistry: 10 µg/ml. Immunohistochemistry on Paraffin Sections: 10 µg/ml.
Reactivity:	Human
Host:	Mouse
Isotype:	IgG2a
Clonality:	Monoclonal
Immunogen:	Human Glut2-transfected NS0 cells.
Specificity:	Recognizes GLUT2 expression on hGlut2-transfected NS0 cells but not on control transfectants. Detects Glut2 on the surface of the human intestinal cell line Caco2 in Flow Cytometry and on fixed cells in Immunocytochemistry tests. Based on Flow Cytometric tests on transfected cells, this antibody has no cross-reactivity with Human Glut1 or Human Glut3.
Formulation:	PBS containing 5% Trehalose State: Purified State: Liquid purified Ig fraction.
Concentration:	lot specific
Purification:	Protein G Chromatography.
Conjugation:	Unconjugated
Storage:	Store undiluted at 2-8°C for one month or (in aliquots) at -20°C for longer. Avoid repeated freezing and thawing.
Stability:	Shelf life: one year from despatch.
Gene Name:	solute carrier family 2 member 2
Database Link:	Entrez Gene 6514 Human P11168



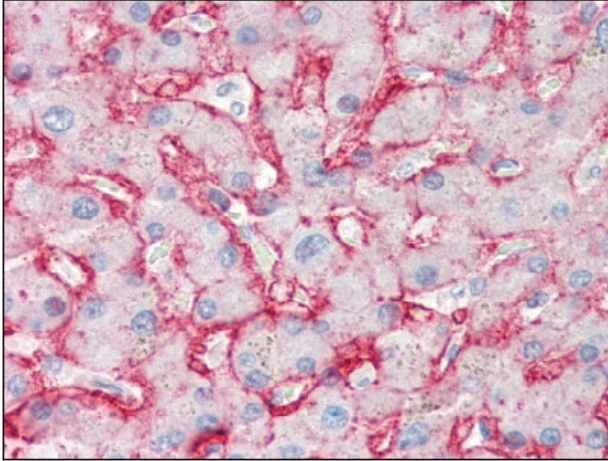
[View online »](#)

Background:

Glut2 belongs to the facilitative glucose transporter protein family that comprises 13 members. It is an integral membrane protein with 12 transmembrane domains. Glut2 is expressed predominantly in liver, intestine, kidney, and pancreatic beta-cells. It is a low-affinity glucose transporter that has been suggested to function as a glucose sensor in pancreatic beta-cells and facilitate either glucose uptake or efflux from cells depending on the nutritional state.

Synonyms:

GLUT-2, Glucose transporter 2, Glucose transporter type 2 liver

Product images:

, at 10 ug/ml, staining Glucose Transporter GLUT2 in formalin-fixed, paraffin-embedded human Liver tissue by Immunohistochemistry.