

Product datasheet for **AM08388PU-N**

TLR8 (750-850) Mouse Monoclonal Antibody [Clone ID: 44C143]

Product data:

Product Type:	Primary Antibodies
Clone Name:	44C143
Applications:	FC, IHC, WB
Recommended Dilution:	Flow Cytometry. Immunohistochemistry on Paraffin Sections: 5 µg/ml. Western Blot: 1 - 3 µg/ml.
Reactivity:	Human, Mouse
Host:	Mouse
Isotype:	IgG1
Clonality:	Monoclonal
Immunogen:	A KLH-conjugated synthetic peptide corresponding to a region within amino acids 750-850 of Human TLR8.
Specificity:	The antibody recognizes Toll-like receptor 8 at aa 750-850.
Formulation:	PBS State: Purified State: Liquid purified Ig fraction Preservative: 0.05% Sodium Azide
Concentration:	lot specific
Purification:	Protein G Chromatography
Conjugation:	Unconjugated
Storage:	Store the antibody undiluted at 2-8°C for one month or (in aliquots) at -20°C for longer. Avoid repeated freezing and thawing.
Stability:	Shelf life: one year from despatch.
Gene Name:	toll like receptor 8
Database Link:	Entrez Gene 51311 Human Q9NR97



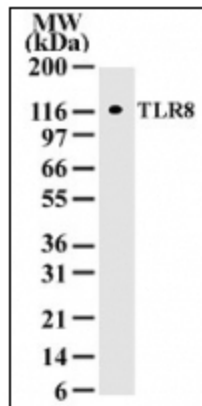
[View online »](#)

Background:

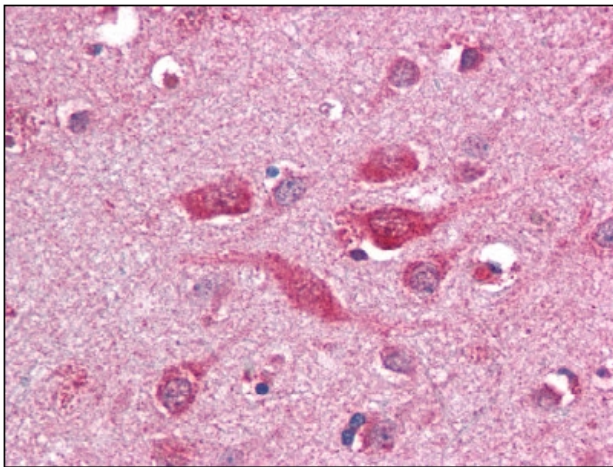
The Toll-like receptor (TLR) family in mammal comprises a family of transmembrane proteins characterized by multiple copies of leucine rich repeats in the extracellular domain and IL-1 receptor motif in the cytoplasmic domain. Like its counterparts in *Drosophila*, TLRs signal through adaptor molecules (1). The TLR family is a phylogenetically conserved mediator of innate immunity that is essential for microbial recognition (2). Ten human homologs of TLRs (TLR1-10) have been described (3). TLR8 gene contains three exons, two of which have coding function (4). TLR8 cDNA codes for a protein of approximate molecular weight of 120 kDa (4,5).

Synonyms:

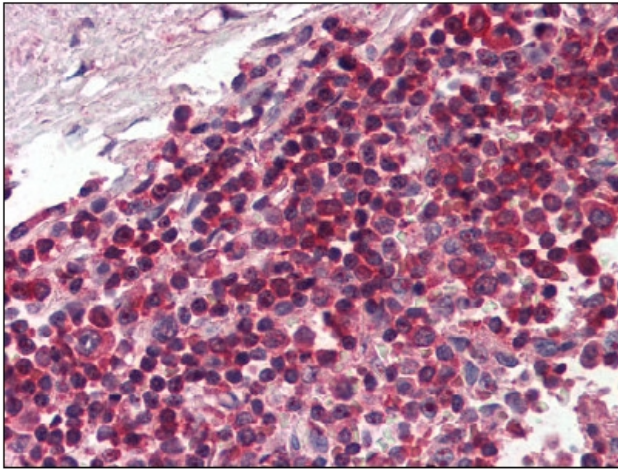
Toll-like receptor 8, UNQ249/PRO286

Product images:


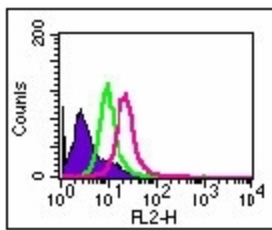
Western blot analysis of TLR8 in cell lysates from 293 transfected with human TLR8 using antibody at a concentration of 2 ug/ml.



at 5 ug/ml staining TLR8 in formalin fixed and paraffin embedded brain cortex.



at 5 ug/ml staining TLR8 in formalin fixed and paraffin embedded spleen tissue.



Intracellular flow analysis of TLR8 in 1×10^6 Ramos cells using 0.5 ug of antibody. Shaded histogram represents Ramos cells without antibody, Green represents isotype control, Purple represents anti-TLR8 antibody