

Product datasheet for **AM08323PU-N**

Tubulin (TUBA1B) Mouse Monoclonal Antibody [Clone ID: TU-16]

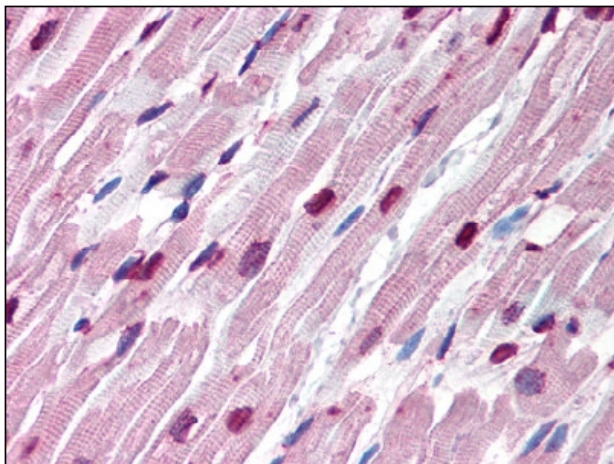
Product data:

Product Type:	Primary Antibodies
Clone Name:	TU-16
Applications:	ELISA, IF, IHC, IP, WB
Recommended Dilution:	ELISA. Immunocytochemistry. Immunohistochemistry on Paraffin Sections: 10 µg/ml. Inhb. Immunoprecipitation: 1 - 2 µg/ml. Western Blot: 1 - 2 µg/ml.
Reactivity:	All Species, Human, Porcine
Host:	Mouse
Isotype:	IgM
Clonality:	Monoclonal
Immunogen:	Porcine brain microtubule alpha-Tubulin purified protein.
Specificity:	Reacts with alpha-Tubulin of all tested species, under denaturing and non-denaturing conditions.
Formulation:	PBS, pH 7.4 containing 15 mM Sodium Azide as preservative. State: Purified State: Liquid purified Ig fraction.
Concentration:	lot specific
Purification:	Ammonium Sulphate Precipitation.
Conjugation:	Unconjugated
Storage:	Store the antibody undiluted at 2-8°C DO NOT FREEZE!
Stability:	Shelf life: one year from despatch.
Gene Name:	tubulin alpha 1b
Database Link:	Entrez Gene 10376 Human P68363



[View online »](#)

Background:	Tubulin is the major building block of microtubules. This intracellular cylindrical filamentous structure is present in almost all eukaryotic cells. Microtubules function as structural and mobile elements in mitosis, intracellular transport, flagellar movement and in the cytoskeleton. Tubulin is a heterodimer which consists of alpha tubulin and beta tubulin.
Synonyms:	Tubulin alpha-1B chain, Tubulin alpha-ubiquitous chain, Alpha-tubulin ubiquitous, Tubulin K-alpha-1
Note:	Predicted Molecular Weight: 54 kDa.
Protein Families:	Druggable Genome
Protein Pathways:	Gap junction, Pathogenic Escherichia coli infection

Product images:

at 10 ug/ml staining alpha Tubulin in Pig heart by Immunohistochemistry, Formalin-fixed, paraffin-embedded tissue.