

Product datasheet for **AM08244AF-N**

CD18 (ITGB2) Mouse Monoclonal Antibody [Clone ID: MEM-48]

Product data:

Product Type:	Primary Antibodies
Clone Name:	MEM-48
Applications:	FC, FN, IHC, IP, WB
Recommended Dilution:	Flow Cytometry: 2 µg/ml. Func. Immunohistochemistry on Frozen Sections. Immunohistochemistry on Paraffin Sections: 10 µg/ml. Immunoprecipitation: 2 µg/ml. Western Blot: 2 µg/ml.
Reactivity:	Human
Host:	Mouse
Isotype:	IgG1
Clonality:	Monoclonal
Immunogen:	Leukocytes of a patient suffering from a LGL-type leukemia .
Specificity:	Recognizes an epitope involving residues 534-546 in cysteine-rich repeat 3 of the CD18 antigen (integrin beta2 subunit; beta2 integrin). CD18 is a 90-95 kD type I transmembrane protein expressed on all leukocytes.
Formulation:	PBS, pH~7.4 without preservatives State: Azide Free State: Liquid (0.2 µm sterile filtered) purified Ig fraction
Concentration:	lot specific
Purification:	Protein A Chromatography
Conjugation:	Unconjugated
Storage:	Store the antibody undiluted at 2-8°C for one month or (in aliquots) at -20°C for longer. Avoid repeated freezing and thawing.
Stability:	Shelf life: one year from despatch.
Gene Name:	integrin subunit beta 2



[View online »](#)

Database Link: [Entrez Gene 3689 Human P05107](#)

Background: CD18 is an integrin. Integrins are integral cell surface proteins composed of an alpha chain and a beta chain. A given chain may combine with multiple partners resulting in different integrins. For example, beta 2 combines with the alpha L chain to form the integrin LFA1, and combines with the alpha M chain to form the integrin Mac1. Integrins are integral cell-surface proteins composed of an alpha chain and a beta chain. A given chain may combine with multiple partners resulting in different integrins. For example, beta 2 combines with the alpha L chain to form the integrin LFA-1, and combines with the alpha M chain to form the integrin Mac-1. Integrins are known to participate in cell adhesion as well as cell surface mediated signalling. CD18 is expressed by most leucocytes. Defects in the CD18 gene result in leukocyte adhesion deficiency.

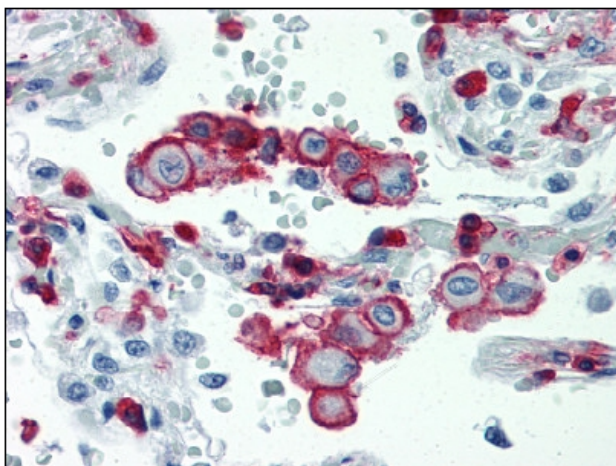
Synonyms: Integrin beta-2, MFI7

Note: **Predicted Molecular Weight:** 85 kDa

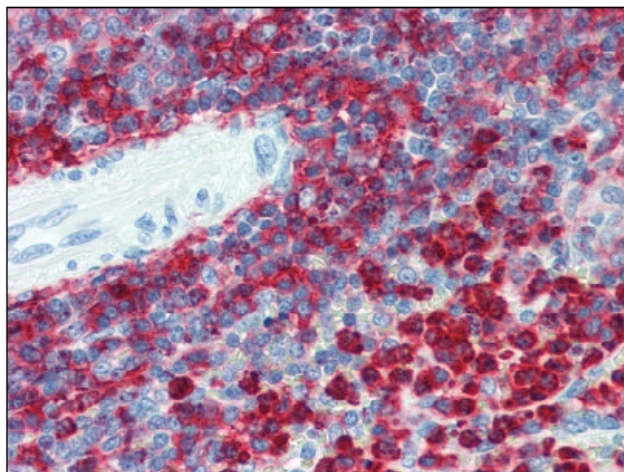
Protein Families: Druggable Genome, Transmembrane

Protein Pathways: Cell adhesion molecules (CAMs), Leukocyte transendothelial migration, Natural killer cell mediated cytotoxicity, Regulation of actin cytoskeleton, Viral myocarditis

Product images:



CD18 antibody staining of Formalin-Fixed, Paraffin-Embedded Human Lung.



CD18 antibody staining of Formalin-Fixed, Paraffin-Embedded Human Spleen.