

Product datasheet for **AM08240PU-N**

Alkaline Phosphatase (ALPP) Mouse Monoclonal Antibody [Clone ID: H7E8]

Product data:

Product Type:	Primary Antibodies
Clone Name:	H7E8
Applications:	ELISA, IHC, WB
Recommended Dilution:	ELISA. Immunohistochemistry on Frozen Sections. Immunohistochemistry on Paraffin Sections: 10 µg/ml. Western Blot.
Reactivity:	Human
Host:	Mouse
Isotype:	IgG2a
Clonality:	Monoclonal
Immunogen:	Purified human ALPP
Specificity:	This antibody recognizes Alkaline Phosphatase Placental-like (ALPP).
Formulation:	PBS, pH 7.4 containing 15 mM Sodium Azide as preservative State: Aff - Purified State: Liquid purified Ig fraction
Concentration:	lot specific
Purification:	Protein A Chromatography
Conjugation:	Unconjugated
Storage:	Store undiluted at 2-8°C for one month or (in aliquots) at -20°C for longer. Avoid repeated freezing and thawing.
Stability:	Shelf life: one year from despatch.
Gene Name:	alkaline phosphatase, placental
Database Link:	Entrez Gene 250 Human P05187



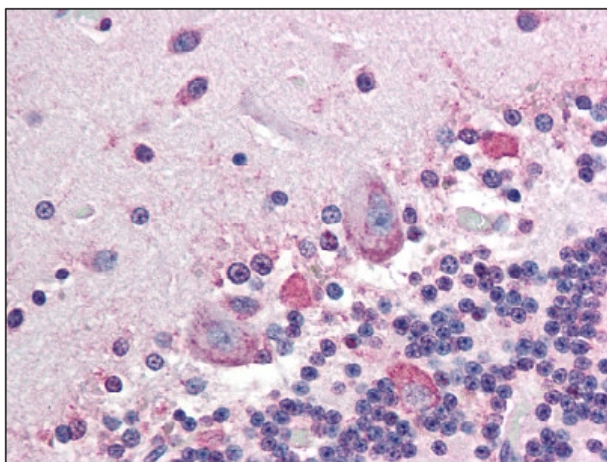
[View online »](#)

Background: Alkaline phosphatases are phosphodiesterases. The placental-specific isozyme of Alkaline Phosphatase (PLAP) is found in trophoblast cells of normal human mature placenta, seminomas of testis and ovarian carcinomas. Detection of alkaline phosphatase in serum is a marker for ovarian and testicular cancer.

Synonyms: PLAP-1, Alkaline phosphatase Regan isozyme

Note: **Predicted Molecular Weight:** 58 kDa

Product images:



Formalin-Fixed Paraffin-Embedded Human Brain, cerebellum stained with ALPP Antibody (Clone H7E8)