

Product datasheet for **AM08201PU-N**

TIMP4 Mouse Monoclonal Antibody [Clone ID: SB30c]

Product data:

Product Type:	Primary Antibodies
Clone Name:	SB30c
Applications:	IF, IHC, WB
Recommended Dilution:	Western Blot: Detects a band of approximately 26 kDa (predicted Mol. Weight: 26 kDa). Immunohistochemistry on Frozen Sections. Immunocytochemistry/Immunofluorescence: Use at 5 µg/ml.
Reactivity:	Human
Host:	Mouse
Isotype:	IgG2a
Clonality:	Monoclonal
Immunogen:	Recombinant TIMP-4.
Specificity:	This antibody is specific to Human TIMP4.
Formulation:	100 mM Borate buffered saline, pH 8.2. No preservatives or amine-containing buffer salts added. State: Purified State: Liquid purified Ig fraction.
Concentration:	lot specific
Conjugation:	Unconjugated
Storage:	Store the antibody undiluted at 2-8°C for one month or (in aliquots) at -20°C for longer. Avoid repeated freezing and thawing.
Stability:	Shelf life: one year from despatch.
Gene Name:	TIMP metalloproteinase inhibitor 4
Database Link:	Entrez Gene 7079 Human Q99727



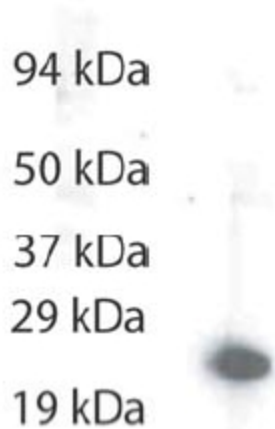
[View online »](#)

Background:

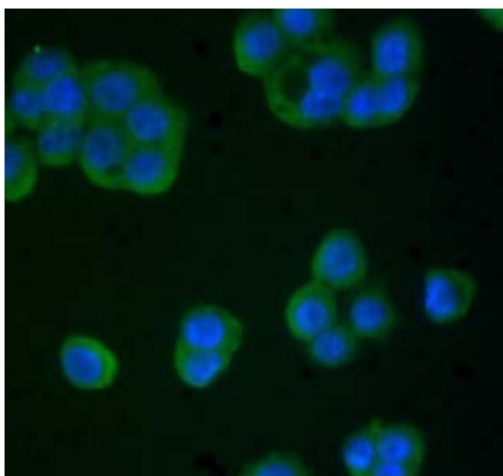
The MMPs and TIMPs can be divided into two groups with respect to gene expression: the majority exhibit inducible expression and a small number are produced constitutively or are expressed at very low levels and are not inducible. Among agents that induce MMP and TIMP production are the inflammatory cytokines TNF alpha and IL1 beta. A marked cell type specificity is a hallmark of both MMP and TIMP gene expression (i.e. a limited number of cell types can be induced to make these proteins). Tissue Inhibitor of Metalloproteinases 4 (TIMP4) was identified by molecular cloning. TIMP4 shows 37 % amino acid identity with TIMP1 and 51 % homology with TIMP2 and TIMP3. TIMP4 is secreted extracellularly, predominantly in heart and brain tissue. It may function in a tissue specific fashion in extracellular matrix (ECM) homeostasis. TIMP4 has a strong inhibitory effect on the invasion of human breast cancer cells across reconstituted basement membranes suggesting that TIMP4 may have an important role in inhibiting primary tumor growth and progression. The human TIMP4 gene has the chromosomal location of 3p25.

Synonyms:

TIMP-4, Tissue inhibitor of metalloproteinases 4, Metalloproteinase inhibitor 4

Product images:

Western Blot: Mouse anti-Human TIMP4 antibody at 2 ug on pancreatic cancer cell lysate with Goat Anti-Mouse IgG2a, human adsorbed to HRP at 1/4000 dilution.



Immunocytochemistry / Immunofluorescence:
Human pancreatic carcinoma cells fixed with
methanol and stained with at 5 ug/ml.