

## Product datasheet for **AM08200PU-N**

### **MMP9 Mouse Monoclonal Antibody [Clone ID: SB15c]**

#### **Product data:**

Product Type:	Primary Antibodies
Clone Name:	SB15c
Applications:	ELISA, IHC
Recommended Dilution:	<b>ELISA:</b> ≤ 1 µg/ml. <b>Immunohistochemistry on Frozen Sections.</b> <b>Immunohistochemistry-Paraffin Sections</b> (Ref-1-3). <b>Immunoblotting</b> (Reported in literature, See also Ref.4).
Reactivity:	Human
Host:	Mouse
Isotype:	IgG2a
Clonality:	Monoclonal
Immunogen:	Recombinant full length MMP-9.
Specificity:	This antibody is specific for Human MMP-9. Does not cross react to Human MMP-1, MMP-2 or MMP-3.
Formulation:	100 mM Borate buffered saline, pH 8.2. No preservatives or amine-containing buffer salts added. State: Purified State: Liquid purified Ig fraction.
Concentration:	lot specific
Conjugation:	Unconjugated
Storage:	Store the antibody undiluted at 2-8°C for one month or (in aliquots) at -20°C for longer. Avoid repeated freezing and thawing.
Stability:	Shelf life: one year from despatch.
Gene Name:	matrix metalloproteinase 9
Database Link:	<a href="#">Entrez Gene 4318 Human P14780</a>



[View online »](#)

**Background:**

MMP9, also known as gelatinase B, is a secreted enzyme which degrades the interstitial collagens, types I, II, and III and is produced by normal alveolar macrophages and granulocytes. The expression of MMP9 increases in Epstein-Barr virus infected lymphoma derived cell lines and may be of significance in typically invasive nasopharyngeal carcinomas. MMP9 is constitutively produced by some tumor cell lines (e.g.: HT1080, HL60, U937) but not by most quiescent cells and tissues. Treatment of cells with the phorbol ester TPA stimulates production of MMP9 in some cell types, but the low protein levels produced (pg/ml) often require concentration of cell culture media to visualize the bands by Western blotting.

**Synonyms:**

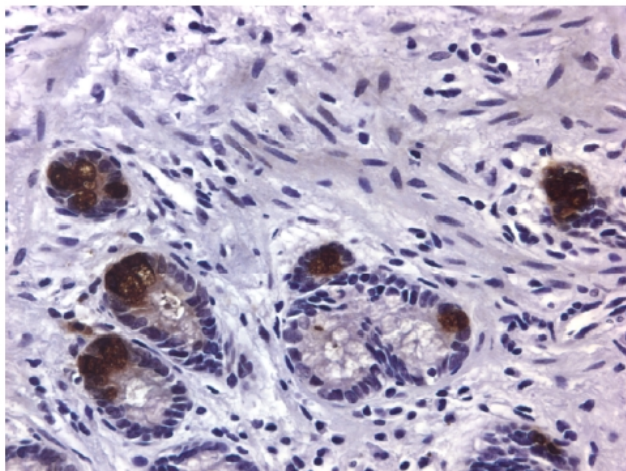
Matrix metalloproteinase-9, MMP9, 92 kDa type IV collagenase, 92 kDa gelatinase, GELB, Gelatinase B, CLG4B

**Protein Families:**

Druggable Genome, Protease

**Protein Pathways:**

Bladder cancer, Leukocyte transendothelial migration, Pathways in cancer

**Product images:**

Immunohistochemistry (Paraffin-Embedded Sections): Human colon tissue stained with at 5 ug/ml.